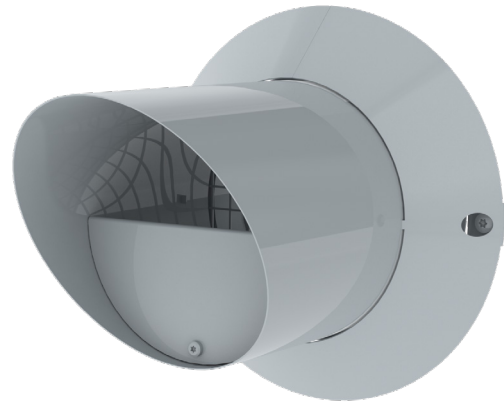


NPC Exhaust nozzle

- Long exhaust flow prevents polluted air penetrate in the supply air zone
- Low resistance reduces energy consumption of ventilators
- Galvanised steel housing finished with powder coating ensures high weather resistance



Application

NPC is an ideal device to solve exhaust air requirements of apartment houses to be renovated.

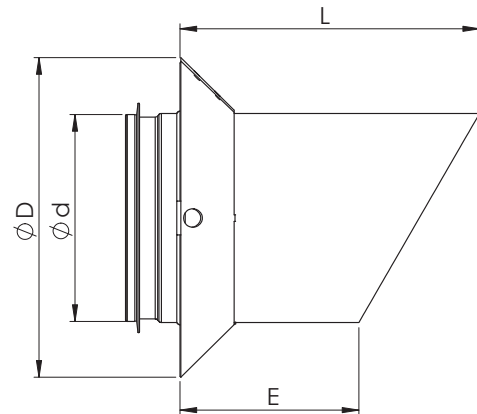


Structure and dimensions

Manufactured as standard of galvanized steel sheet and finished with grey powder coat (RAL 7000).

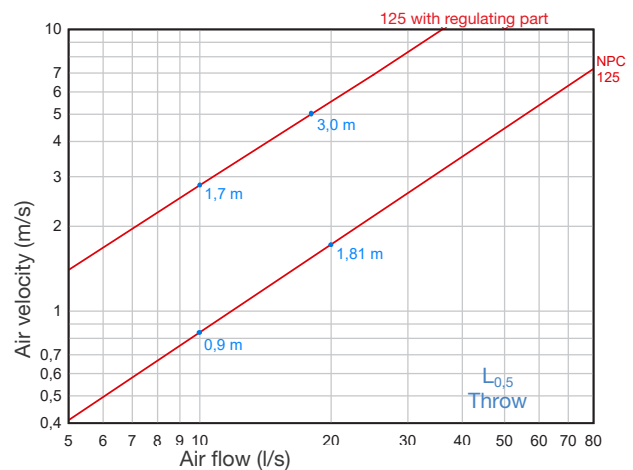
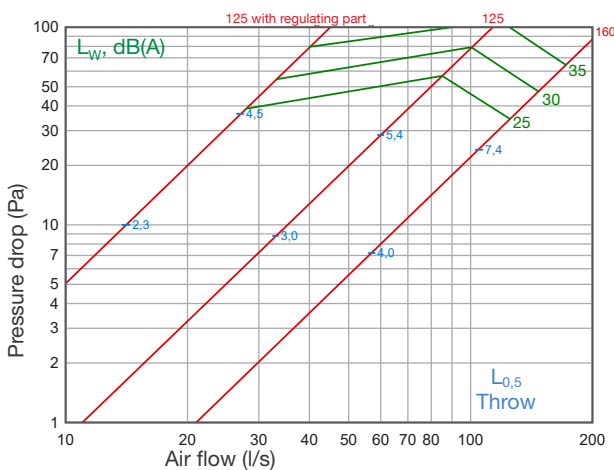
Exhaust air connection with rubber gasket and mesh.

Nominal size Ød, mm	D, mm	L, mm	E, mm	Weight, kg
125	190	181	112	0,55
160	235	255	163	0,7



Technical data

Exhaust air - Pressure drop - Air flow - Throw



Product codes

NPC	Ød	RAL7000
Marking	Nominal size	Color code

Example: NPC 160 RAL7000