

UVKI Roof hood

UVKI rectangular roof hood both exhaust or free flow ventilation systems.

Features:

- Low design
- Excellent water separation
- Solid structure
- Low pressure loss
- 12 standard dimensions



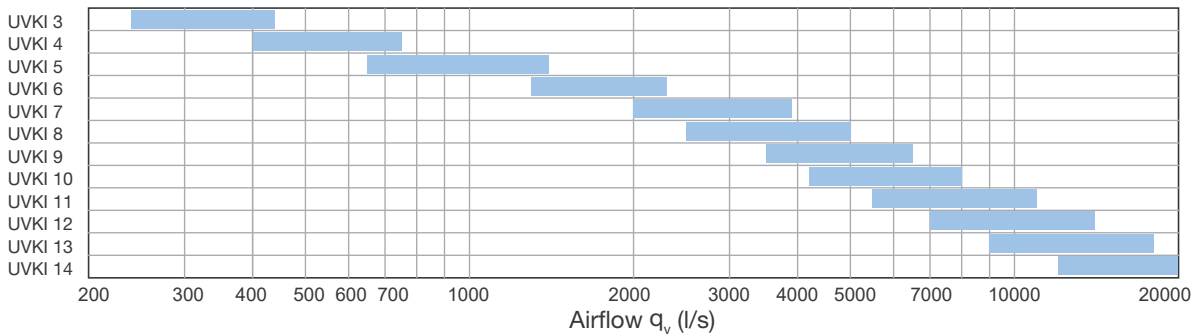
UVKI with external roof transition connection:

- 12 standard dimensions
- Simplifies installation
- Waterproof and safe installation

Application

Suitable for both natural and mechanical ventilation.
Rainwater is drained onto the roof by the structure of the hood.

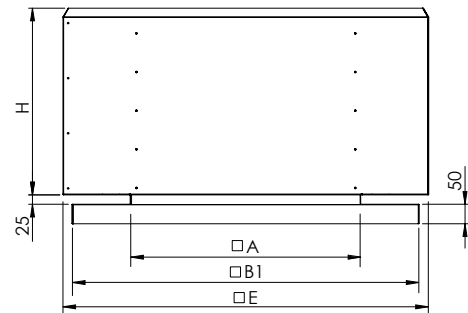
Quick selection



Material and sizes

Manufactured of zinc-magnesium coated sheet steel DX51D+ZM310. Can also be manufactured of other materials and in coated finish. As standard the roof hood is manufactured with a rain-plate connection for installation above MKLI roof transition.

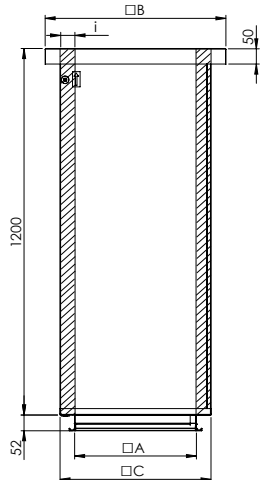
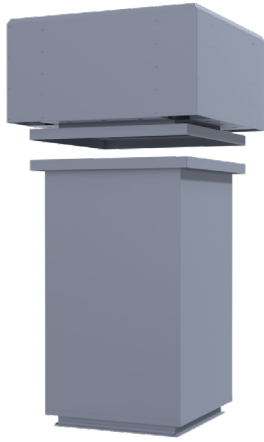
For the lifting there are slots in the internal supports.



Size	E, mm	H, mm	A, mm	B1, mm	Weight, kg	Airflow, l/s	
						Min	max
3	460	270	300	500	10	240	440
4	620	330	400	600	15	400	750
5	785	435	500	700	25	650	1400
6	950	485	600	800	33	1300	2300
7	1115	545	700	900	44	2000	3900
8	1280	605	800	1000	58	2500	5000
9	1450	655	900	1100	67	3500	6500
10	1620	762	1000	1200	96	4200	8000
11	1795	815	1100	1300	107	5500	11000
12	1970	860	1200	1400	125	7000	14000
13	2150	910	1300	1500	145	9000	18000
14	2350	959	1400	1600	170	12000	20000

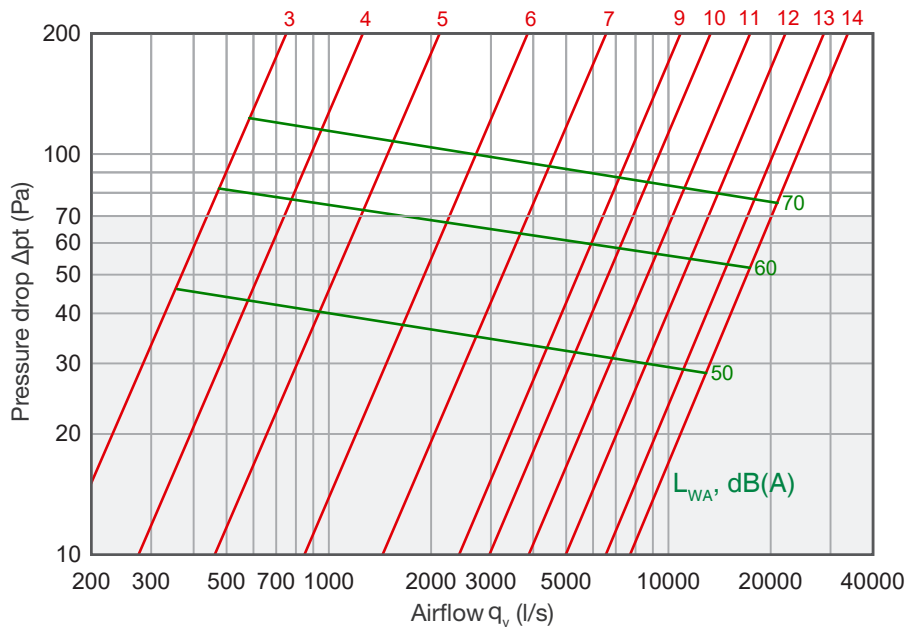
UVKI Roof hood + MKLI Roof transition

UVKI+MKLI	MKLI	UVKI Size	MKLI Size	A, mm	i=50		UVKI+MKLI Weight, kg
					C, mm	B, mm	
		3	3	300	395	495	34
		4	4	400	495	595	45
		5	5	500	595	695	61
		6	6	600	695	795	76
		7	7	700	795	895	95
		8	8	800	895	995	116
		9	9	900	995	1095	142
		10	10	1000	1095	1195	179
		11	11	1100	1195	1295	198
		12	12	1200	1295	1395	225
		13	13	1300	1395	1495	253
		14	14	1400	1495	1595	287



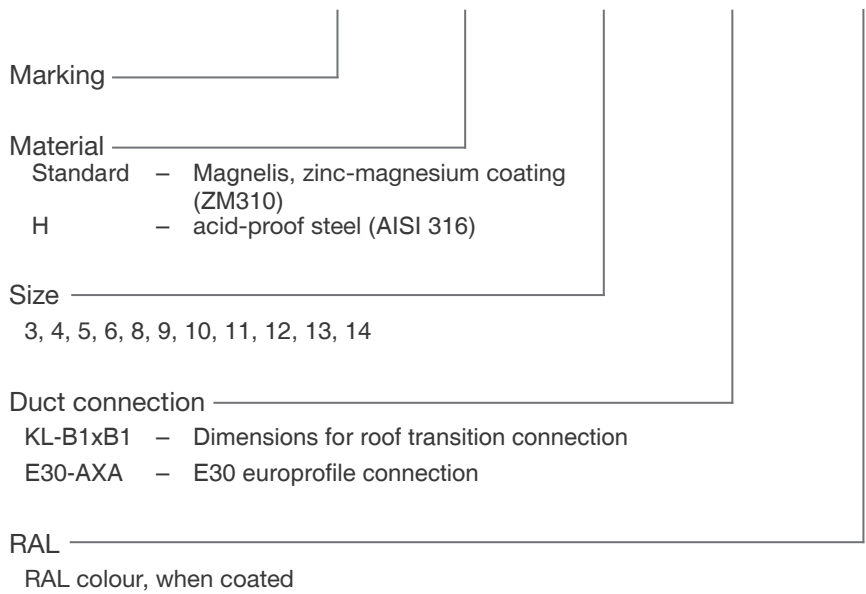
The dimensions of MKLI are with 50 mm insulation.
 Data for MKLI with 100 mm insulation (EI120) see MKLI data sheet.
 The standard height of the MKLI is 1200 mm.

Pressure drop - Airflow - Extract air



Product codes

UVKI - Material - A - KL-B1xB1 - RAL



- Example:**
- UVKI 4 Roof hood
 - UVK-H 4 Roof hood, AISI316
 - UVKI 4-RAL7005 Roof hood (coated)