

**MKL Roof transition**

Roof transition, easily adapted for required roof incline by angle brackets. Also functions as a silencer when fitted with a perforated inner shell.

**Material and dimensions**

As standard manufactured of zinc-magnesium coated sheet steel (DX51D+ZM310) and insulated with 50 mm mineral wool.

MKL inner shell is made of perforated sheet steel.

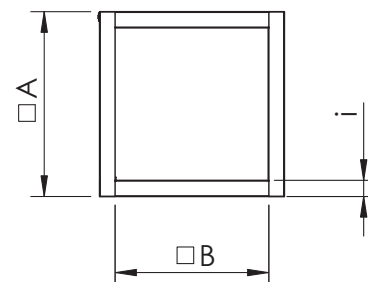
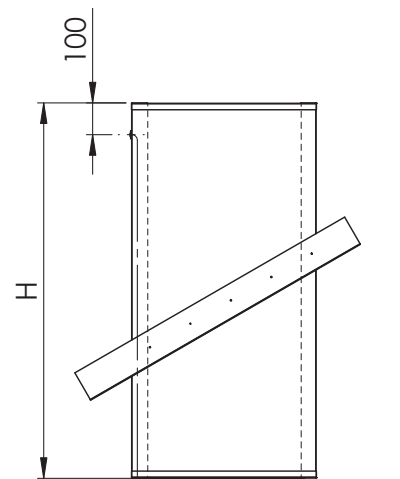
Possible to produce with 100 mm fire insulation mineral wool (compliance to EI 120 class) and non-perforated sheet steel inner shell. Used fire insulation meets the testing methods requirements according to EN1366-1 and is VTT certified. Fire insulation strengths in accordance with EN-13501-1.

Standard height 1200 mm. Other heights can be ordered (800-2000 mm).

As standard, the roof transition is equipped with cable conduit for electric cable installation. The cable drawn in through the bottom of the roof transition and exit 100 mm from the top edge.

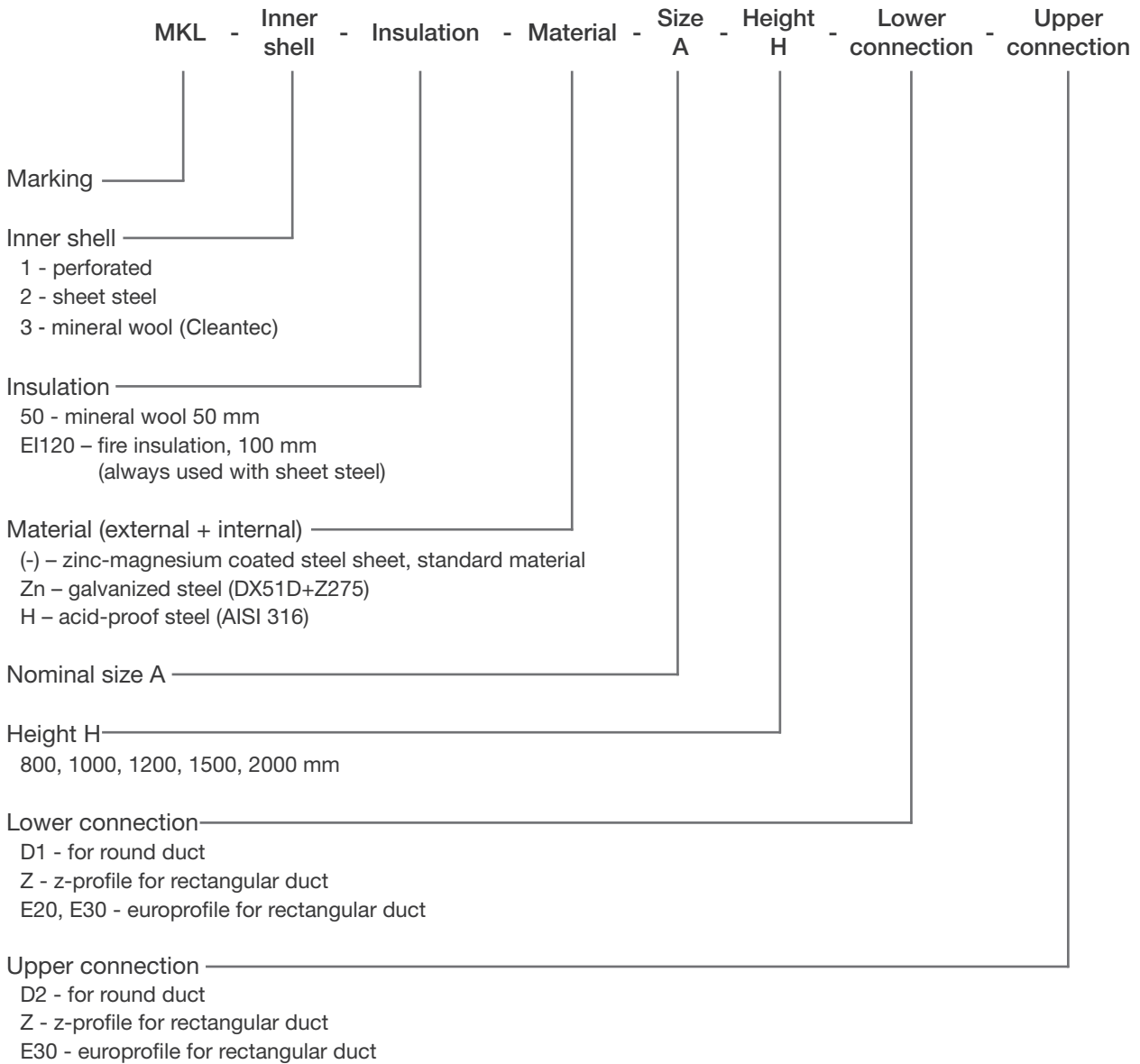
For installation through sloping roofs the roof transition comes as standard with two installation brackets (100x100x1,2 L=A+400).

As an accessory, a non-return damper and a fitting for rectangular or round duct/roof hood connection.



Nominal size	A, mm	B, mm	
		i=50 mm	i=100 mm
300	295	192	92
400	395	292	192
500	495	392	292
600	595	492	392
700	695	592	492
730	725	622	522
750	745	642	542
800	795	692	592
900	895	792	692
1000	995	892	792
1100	1095	992	892
1200	1195	1092	992
1300	1295	1192	1092
1400	1395	1292	1192
1500	1495	1392	1292

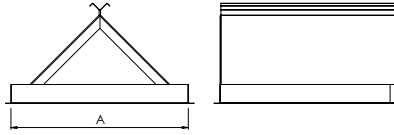
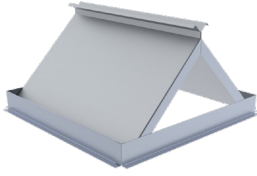
**Product codes**



**Example:**      **MKL-1-50-400-1000**  
                      **MKL-2-50-600-800**  
                      **MKL-2-EI120-400-1000**

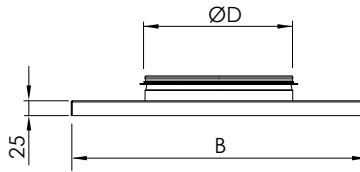
**Accessories:**

**MKLT (AxA)**  
Return damper



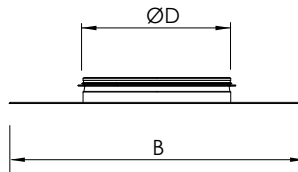
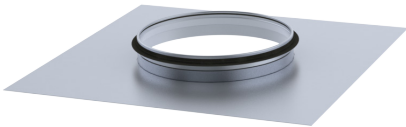
**Example:**  
MKLT 300x300

**MKLV (d-BxB)**  
Round coupling with rain-plate



**Example:**  
MKLV 200-400x400

**MKLS (d-BxB)**  
Round coupling



**Example:**  
MKLS 200-400x400