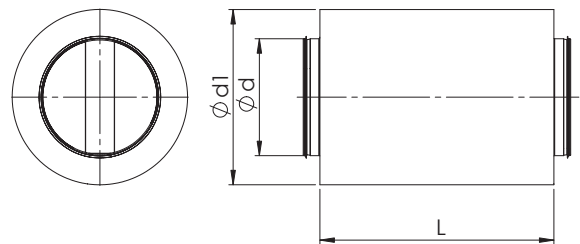
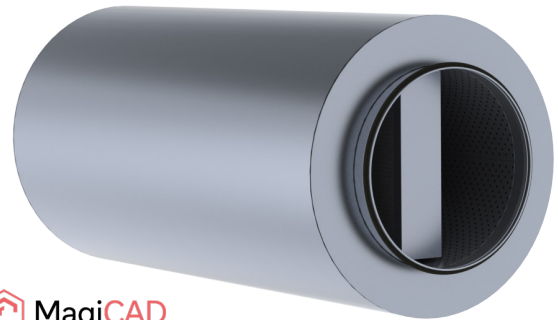


NRFB 100/NRPB 100 Silencer

Round silencer with 100 mm sound absorption and 100 mm absorption element. NRFB-silencer's sound absorption material is mineral wool and NRPB-silencer's a synthetic sound insulation.

The perforated inner tube and outer shell are manufactured of galvanized steel. Between the inner tube and the insulation, there is fabric to prevent wool particles from entering the duct system.



Sound attenuation and dimensions

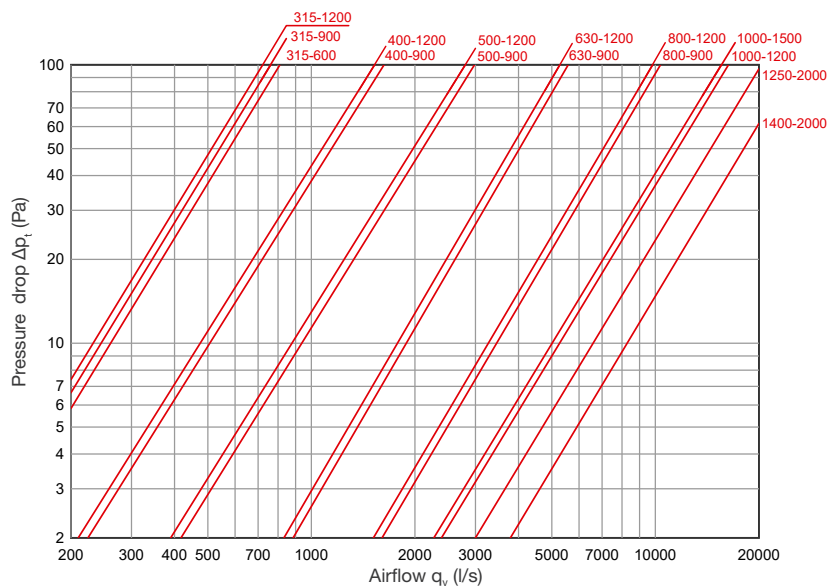
NRFB 100 (absorption material mineral wool)

Nominal size $\varnothing d$ mm	L, mm	$\varnothing d_1$, mm	Sound attenuation (dB)								Weight, kg
			Mean frequency of octave band (Hz)								
			63	125	250	500	1000	2000	4000	8000	
315	600	515	3	7	11	18	24	33	23	16	25,5
315	900	515	4	8	16	26	34	43	30	20	37,3
315	1200	515	7	12	23	34	42	52	35	23	48,1
400	900	600	4	8	13	21	30	34	22	15	45,2
400	1200	600	5	11	19	28	37	42	26	18	57,9
500	900	700	3	6	11	18	27	25	16	13	53,1
500	1200	700	4	8	15	23	33	32	20	15	70,1
630	900	830	2	5	9	15	23	18	13	10	66,0
630	1200	830	3	7	12	19	28	21	15	12	83,6
800	900	1000	1	3	7	15	23	17	10	7	84,6
800	1200	1000	2	5	9	14	21	17	11	9	107,8

NRPB 100 (absorption material synthetic sound insulation)

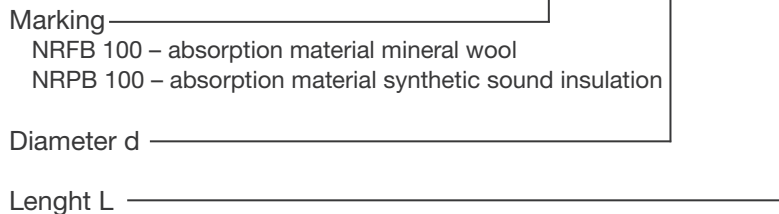
Nominal size $\varnothing d$ mm	L, mm	$\varnothing d_1$, mm	Sound attenuation (dB)								Weight, kg
			Mean frequency of octave band (Hz)								
			63	125	250	500	1000	2000	4000	8000	
315	600	515	3	7	8	9	22	31	23	17	24
315	900	515	4	9	12	15	30	41	30	22	35
315	1200	515	8	14	18	20	34	48	34	23	45
400	900	600	4	8	12	15	26	34	22	16	42
400	1200	600	5	12	15	15	29	40	26	18	54
500	900	700	3	7	7	12	24	15	15	14	49
500	1200	700	3	9	10	16	26	24	20	15	64
630	900	830	2	6	6	14	21	16	16	10	61
630	1200	830	3	7	9	16	26	19	17	12	78
800	900	1000	1	3	7	15	23	17	9	8	80
800	1200	1000	2	5	9	13	22	16	11	11	102

Technical data



Product codes

NRFB 100 - d - L



Example: NRFB 100 315-900