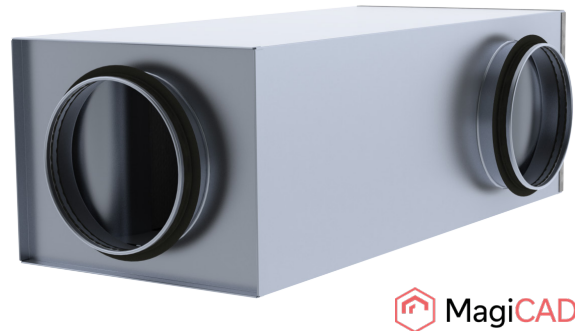


**NKL Bend silencer**

Rectangular bend silencer with round duct connections and without perforated sheet inside. Suitable for general ventilation system silencer and where a horizontal right-angled change of direction is required, especially in situations where the silencer dimensions should be smaller and the absorption values should be good. We recommend using the MagiCAD web tool ([www.magicad.cloud](http://www.magicad.cloud)) to select the appropriate silencer and optimize the connection size and length for best performance.

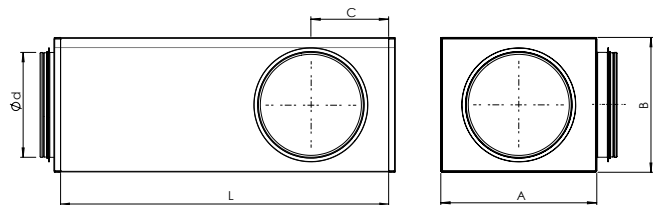


- Diameters 100-200 mm
- Silencer's dimensions are minimized while maintaining excellent noise reduction characteristics
- The compactness of the silencer makes it suitable for installation above suspended ceilings or in places where installation space is limited
- Insulation material is resistant to cleaning (nylon brush)
- Insulation material coating does not absorb moisture
- Density class C

**Design and Dimensions**

NKL silencers outer shell is made of galvanized sheet steel. Connections are with rubber gaskets. Sound absorption duct element with good attenuation characteristics is made from synthetic material. Used synthetic insulation is classified as M1. Standard lengths 600 and 1000 mm.

Nominal size					Weight
Ød mm	L, mm	A, mm	B, mm	C, mm	kg
100	600	210	155	100	4,8
100	1000	210	155	100	7,1
125	600	225	180	112	5,5
125	1000	225	180	112	8,0
160	600	280	215	130	7,0
160	1000	280	215	130	10,2
200	600	295	255	150	7,9
200	1000	295	255	150	11,6



**Technical data**

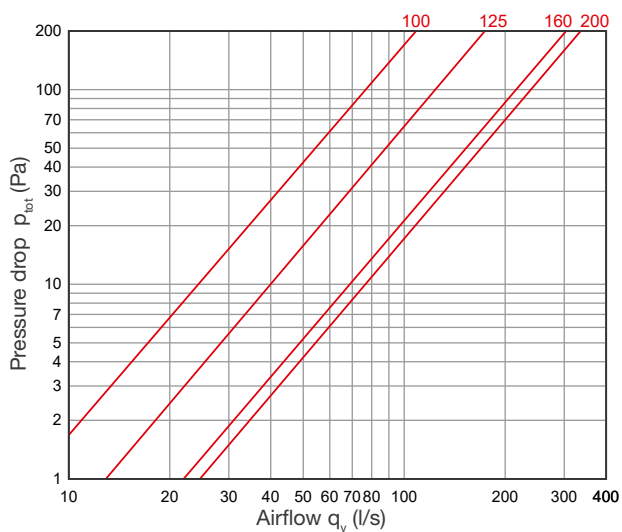
**Sound attenuation**

Sound attenuation is specified to ISO 7235, i.e. static integral attenuation for duct products.

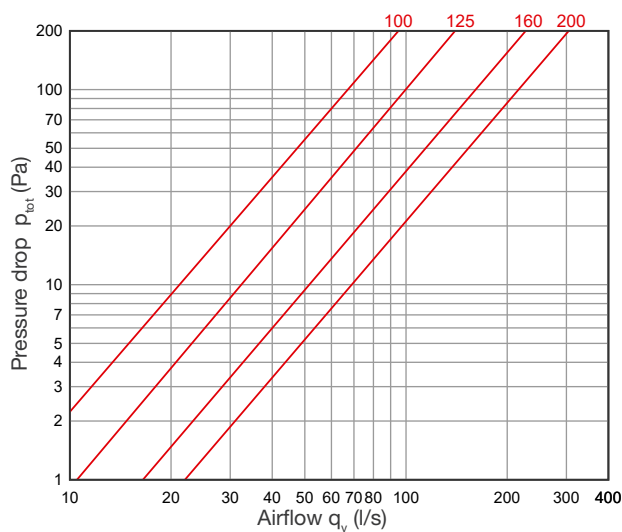
	Sound attenuation (dB)							
	Mean frequency of octave band (Hz)							
	63	125	250	500	1000	2000	4000	8000
NKL 100/600	6	16	18	17	31	37	41	35
NKL 100/1000	0	23	25	25	41	48	47	44
NKL 125/600	1	17	14	18	28	34	39	30
NKL 125/1000	4	24	20	25	37	43	47	44
NKL 160/600	0	15	14	20	28	32	31	29
NKL 160/1000	6	19	20	26	36	44	48	44
NKL 200/600	5	10	12	21	26	28	26	25
NKL 200/1000	11	13	18	27	35	44	42	36

Pressure drop

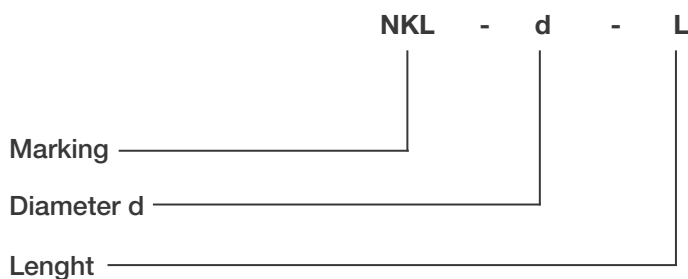
NKL L=600



NKL L=1000



Product codes



Example: NKL 160-600