



NORDcanopy

HR-O Grease Canopies

Grease canopy without supply air

Laser welded structure

Efficient HFK cyclone filters protected as an utility model

Energy efficient LED lights

Registered design no. 007972823-0001

General

The NORDcanopy product portfolio consists of canopies and related air treatment products for use in commercial and industrial kitchen ventilation to create a comfortable and hygienic work environment.

Our products combine stylish design with highly effective grease, heat and odor removal performance for your project. Thanks to our highly efficient HFK centrifugal filters, 95% of cooking greases can be eliminated from the kitchen exhaust airstream.

We at ETS Nord know that no projects are exactly alike. We have designed our canopies to be modular, so we can custom design and manufacture a NORDcanopy solution to meet your each and every project requirement or technical need.

NORDcanopy products are manufactured from stainless steel according to standards EN 10088- 2:2024, EN 1.4301 or AISI 304 (AISI 304, surface 2K).

HR Grease Canopies

HR-OC
Grease canopy

7

aSAP



HR-OC is our standard canopy and satisfies the needs of most commercial kitchens.

HR-OG
Grill canopy

10

aSAP

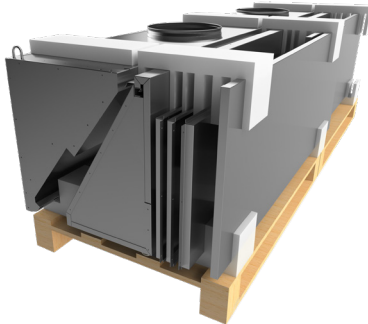


The HR-OG high-capacity grill canopy makes it easy to exhaust the high volumes of cooking gases and smoke often found above grills and broilers. It can support up to an amazing 520 l/s per linear meter!

Options & Accessories

aSAP Solution

14



When access to the job site or kitchen space is limited, an ETS NORD aSAP Self-Assembly Package can be the perfect solution. Narrow passageways and complex floor plans are no longer a problem with our aSAP-packaged canopy modules, which are easily assembled at the job site.

FET

Grease filter removal tool

14



With the ETS NORD "Helping Hand" filter tool, professional kitchen operators can safely and easily service their grease filters.

Helping Hand allows grease filters to be removed and replaced without the cumbersome need to climb on or reach over kitchen equipment.

CP

Cover plates

14



Mounted in the area between canopy and ceiling, when conduits and other components are to be concealed.

HFK

Grease filter

15



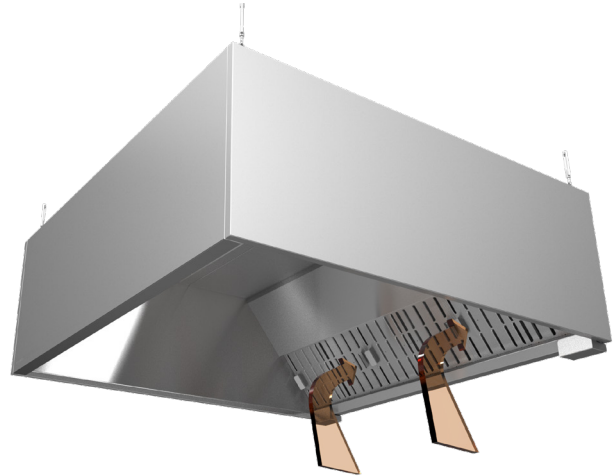
HFK is a high efficiency grease filter designed for use in ventilation hoods of commercial kitchens or other food production facilities.

HR-O Grease Canopy

HR-O kitchen canopy ensures a clean, hygienic and comfortable work environment by removing pollutants, excessive heat and grease from your commercial kitchen operation.

Operation

- Kitchen canopy for removing particles of heat, grease and other dirt from the cooking appliances.
- Contaminated air is drawn into the grease filters, where grease and other dirt particles are separated from the exhaust air. The grease then drains down from the filters into the collection channel leading to its collection container.



Recommended data

Section length L	Extraction airflow l/s (Δp_{tot} 14-48 Pa)
1000	140-260
1500	210-390
2000	280-520
2500	350-650

Construction

- The canopy is made from stainless steel (AISI 304, surface 2K).
- Duct connections are equipped with rubber gaskets.
- The laser welded end walls of the exhaust chamber prevent the possible spillage of grease from the inside of the chamber, thereby reducing the possibility of bacteria forming in the joints of the parts.
- Easy-to-clean surfaces.
- Exhaust pipes can be connected and insulated via the removable ceiling panel.
- A sectional canopy is supplied without partition walls.
- Adjustable suspension hooks are included. The suspension hook allows 360 degree rotation and the adjustment range is up to 65 mm.



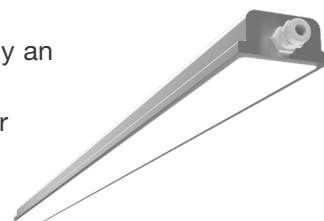
Lighting

Professional kitchens require functional lighting to ensure that employees have a safe and effective work environment.

ETS NORD professional kitchen canopies use the next generation of energy-efficient recessed LED luminaires, which can save as much as 50% more energy compared to old technologies. The range of luminaires includes both integrated and surface-mounted luminaires. The size and number of light fixtures are determined by the size of the canopy, to ensure there is enough light output for the entire workspace.

Canopies include LED luminaires integrated into their ceilings, protected by an aluminum and plastic glass casing.

Our integrated LED luminaires have two color temperature options - colder 4000K and warmer 3000K. It is also possible to choose between regular LED and DALI2 (dimnable) luminaires.



LED luminaires (standard), IP66

Canopy section length (mm)	Luminaires	Lighting length (mm)	Energy use (W)	Color temperature (K)	Color rendering index (Ra)	Flux (lm)
$1000 \leq L < 1300$	LED-4000-600	600	17	4000	90	2907
$1000 \leq L < 1300$	LED-3000-600	600	17	3000	90	2907
$1400 \leq L < 2900$	LED-4000-1200	1200	34	4000	90	6498
$1400 \leq L < 2900$	LED-3000-1200	1200	34	3000	90	6498

DALI2 LED luminaires, IP66

Canopy section length (mm)	Luminaires	Lighting length (mm)	Energy use (W)	Color temperature (K)	Color rendering index (Ra)	Flux (lm)
$1000 \leq L < 1300$	DALI2-4000-600	600	20	4000	90	3000
$1000 \leq L < 1300$	DALI2-3000-600	600	20	3000	90	3000
$1400 \leq L < 2900$	DALI2-4000-1200	1200	37	4000	90	6000
$1400 \leq L < 2900$	DALI2-3000-1200	1200	37	3000	90	6000

Spot LED lighting fixtures, IP65

Light colour: 4000K (colder), 3000K (warmer)

Housing material: Aluminium

Colour separation index: > 80 (Ra)



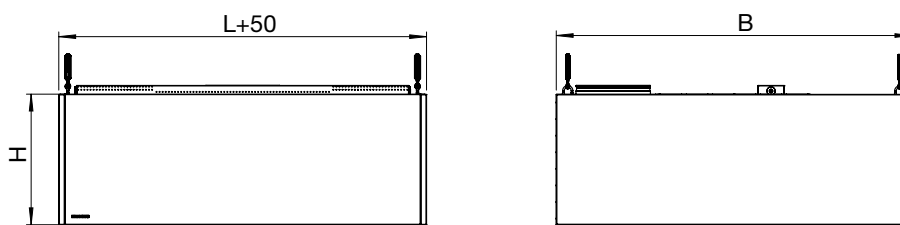
Canopy length (mm)	Spot LED quantity	Energy use (W)	Flux 4000K (lm)	Flux 3000K (lm)	Radiation angle
$1000 \leq L < 1200$	2	16	1340	1240	36°
$1300 \leq L < 1700$	3	24	2010	1860	36°
$1800 \leq L < 2300$	4	32	2680	2480	36°
$2400 \leq L \leq 2900^*$	5	40	3350	3100	36°

*In sectional canopies the amount of SpotLEDs may differ.

Section dimensions

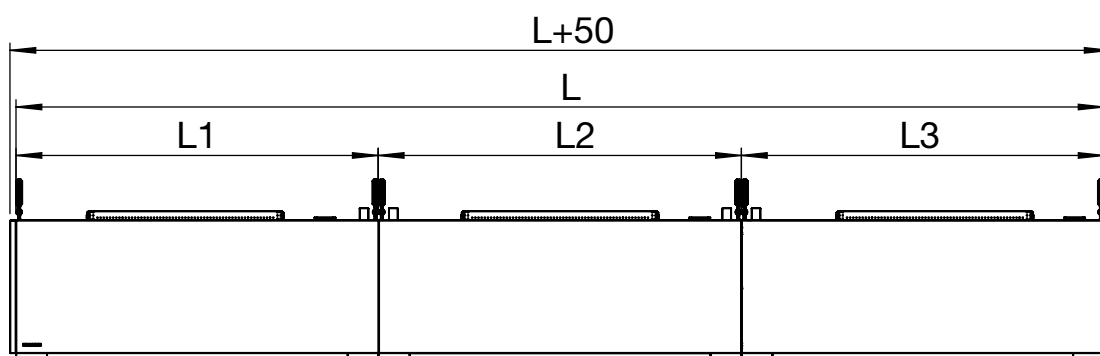
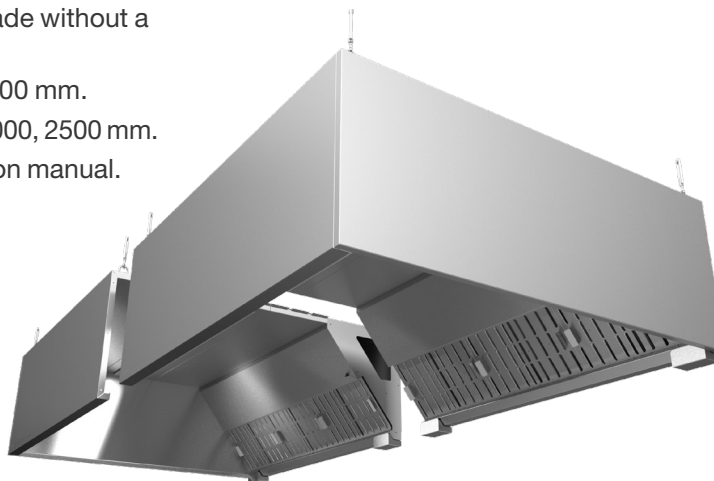
Dimensions, mm

L Length	1000, 1100, ..., 2400, 2500
B Width	600, 700, ..., 1900, 2000
H Height	400, 550



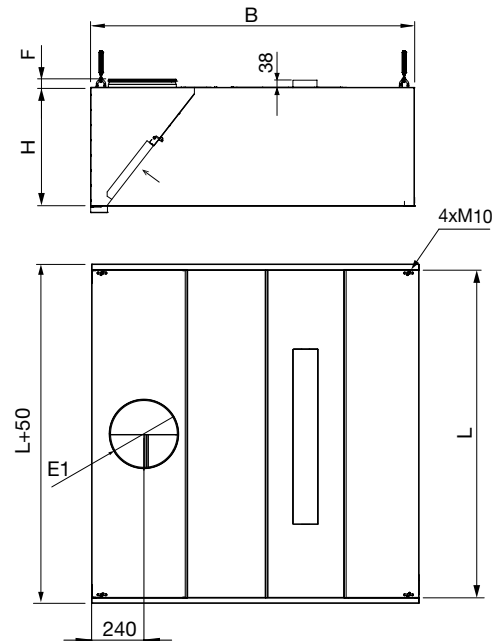
Canopy lengthening with modular sections

- Canopy consisting of several sections are made without a partition wall.
- The maximum size of one section is 2500x2000 mm.
- Preferred length dimensions are 1000, 1500, 2000, 2500 mm.
- For connecting the sections see the installation manual.



HR-OC Grease Canopy

HR-OC Wall installation, 1-part, E1 - one exhaust air chamber



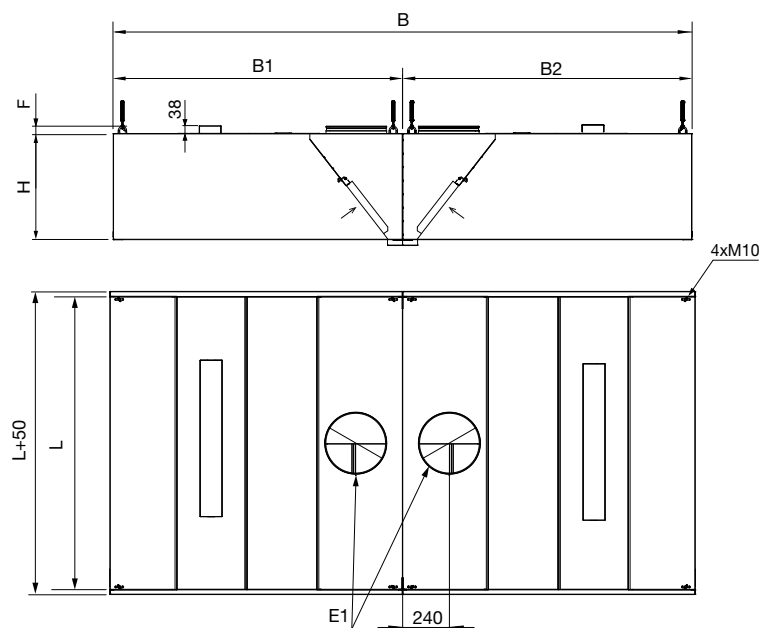
Section dimensions, mm

L Length	1000, 1100, ..., 2400, 2500
B Width	600, 700, ..., 1900, 2000
H Height	400, 550
E1, Ød	200 (F=40), 250 (F=43), 315 (F=43)

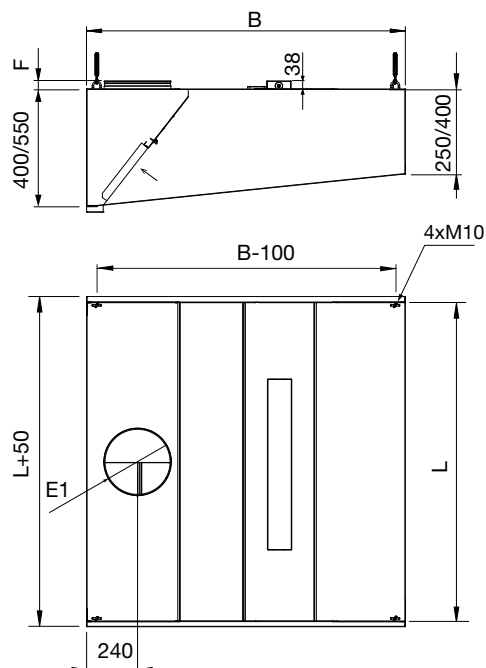
HR-OC-2 island installation, 2-part, E1 - one exhaust air chamber

Section dimensions, mm

L Length	1000, 1100, ..., 2400, 2500
B Width	1200, 1400, ..., 3800, 4000
B1/B2 Width	600, 700, ..., 1900, 2000
H Height	400, 550
E1, Ød	200 (F=40), 250 (F=43), 315 (F=43)



HR-OC Trapezoid canopy wall installation, 1-part, E1 - one exhaust air chamber



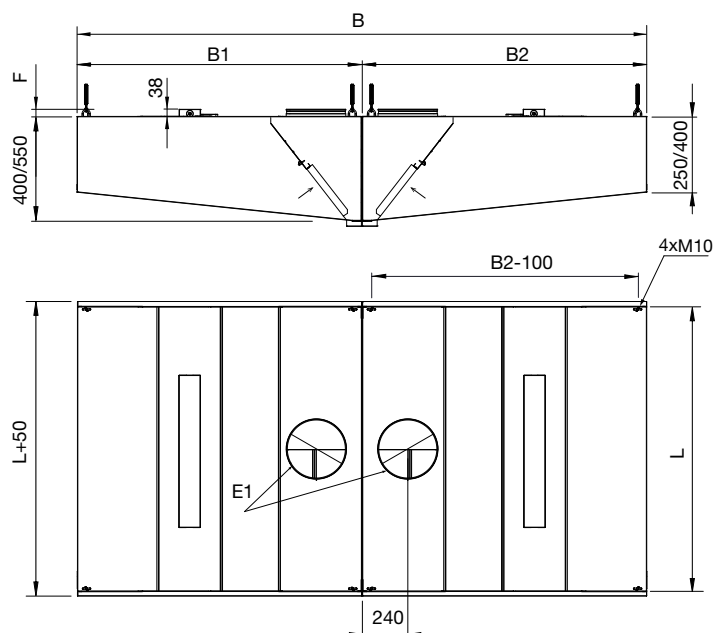
Section dimensions, mm

L Length	1000, 1100, ..., 2400, 2500
B Width	600, 700, ..., 1900, 2000
H Height	400/250, 550/250, 550/400
E1, Ød	200 (F=40), 250 (F=43), 315 (F=43)

HR-OC-2 Trapezoid canopy island installation, 2-parts, E1 - one exhaust air chamber

Section dimensions, mm

L Length	1000, 1100, ..., 2400, 2500
B Width	1200, 1400, ..., 3800, 4000
B1/B2 Width	600, 700, ..., 1900, 2000
H Height	400/250, 550/250, 550/400
E1, Ød	200 (F=40), 250 (F=43), 315 (F=43)



Product marking

HR-OC - aSAP - LxBxH - E1= dxn - HFKxn - XXXxn

Marking

- HR-OC - 1 section in width
- HR-OC-2 - 2 sections in width

aSAP

- aSAP - a Self Assembly Package

Dimensions

- L - Length
- B - Width
- H - Height

Exhaust air

- E1 - One exhaust air chamber
- Ød - Diameter of exhaust air connection
- n - Quantity of exhaust air connections

Grease filters

- HFK
- n - Grease filter quantity

Lighting

- LED-4000-600 - L=600, 17W, 4000K
- LED-3000-600 - L=600, 17W, 3000K
- LED-4000-1200 - L=1200, 34W, 4000K
- LED-3000-1200 - L=1200, 34W, 3000K
- DALI2-4000-600 - L=600, 20W, 4000K
- DALI2-3000-600 - L=600, 20W, 3000K
- DALI2-4000-1200 - L=1200, 37W, 4000K
- DALI2-3000-1200 - L=1200, 37W, 3000K
- SpotLED-3000 - 8W, 3000K
- SpotLED-4000 - 8W, 4000K
- n - Quantity of lighting fixtures

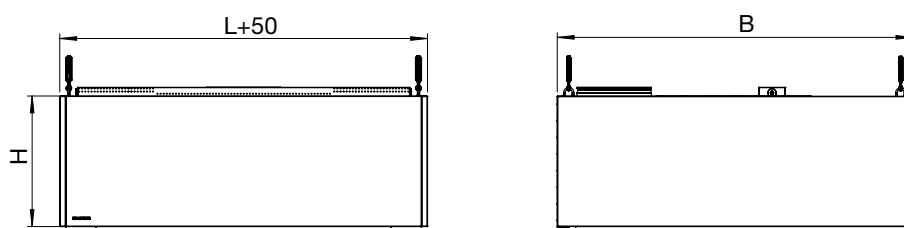
Example: HR-OC - 4000x1500x550 - E1=315x2 - HFKx6 - LED-4000-1200x2

HR-OG Grease Canopy - HIGH CAPACITY

Section dimensions

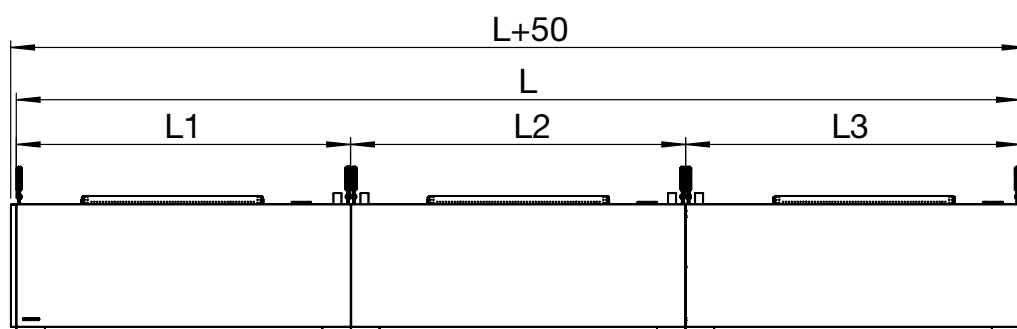
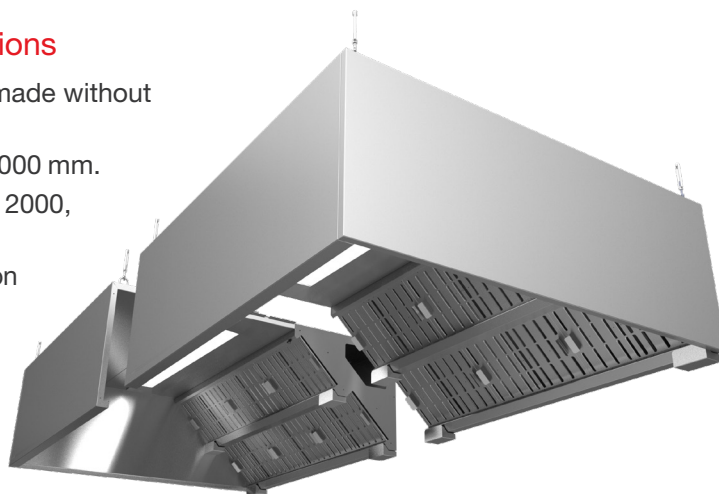
Dimensions, mm

L Length	1000, 1100, ..., 2400, 2500
B Width	1200, 1300, ..., 1900, 2000
H Height	550

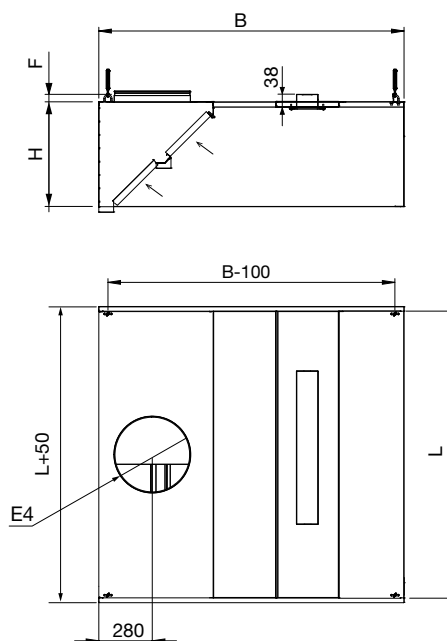


Canopy lengthening with modular sections

- Canopy consisting of several sections are made without a partition wall.
- The maximum size of one section is 2500x2000 mm.
- Preferred length dimensions are 1000, 1500, 2000, 2500 mm.
- For connecting the sections see the installation manual.



HR-OG Wall installation, 1-part, E4 - one exhaust air chamber, HFK filters in dual row



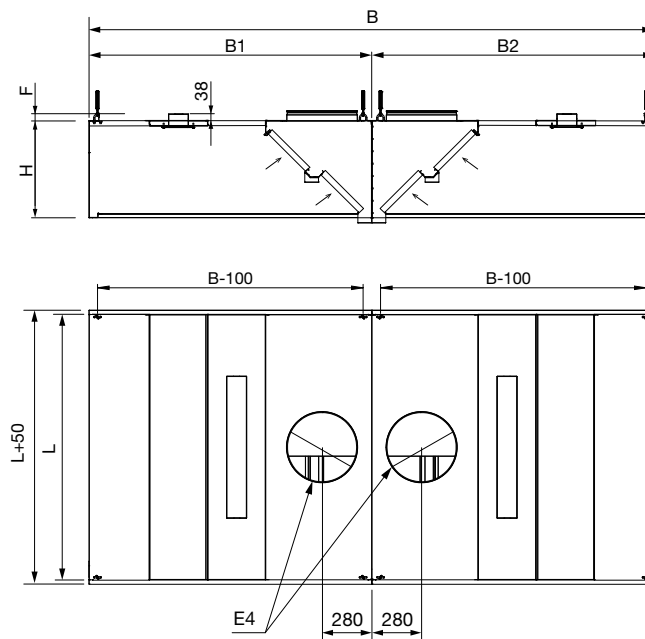
Section dimensions, mm

L Length	1000, 1100, ..., 2400, 2500
B Width	800, 900, ..., 1900, 2000
H Height	550
E4, Ød	315 (F=43), 400 (F=55)

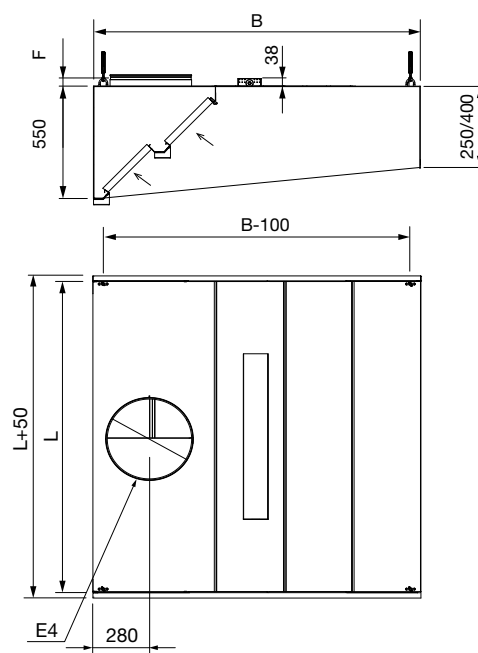
HR-OG-2 island installation, 2-part, E4 - one exhaust air chamber, HFK filters in dual row

Section dimensions, mm

L Length	1000, 1100, ..., 2400, 2500
B Width	1600, 1800, ..., 3800, 4000
B1/B2 Width	800, 900, ..., 1900, 2000
H Height	550
E4, Ød	315 (F=43), 400 (F=55)



HR-OG Trapezoid canopy wall installation, 1-part, E4 - one exhaust air chamber



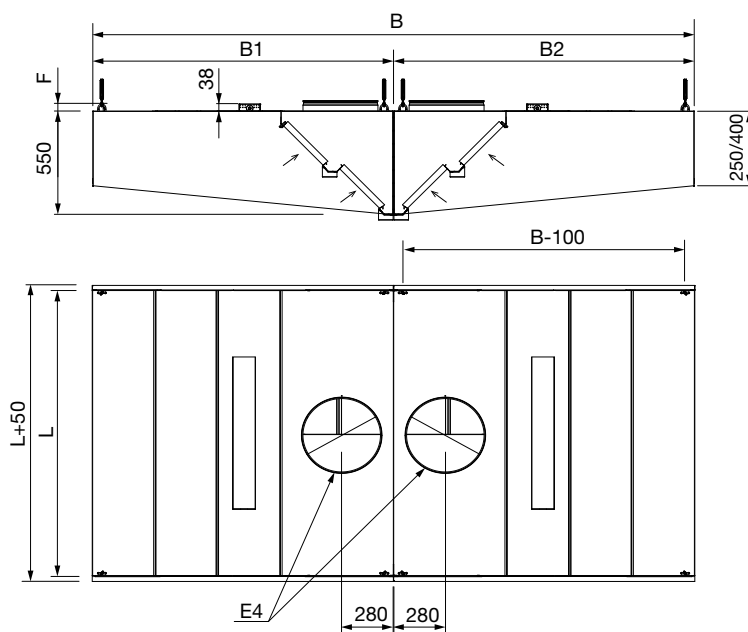
Section dimensions, mm

L Length	1000, 1100, ..., 2400, 2500
B Width	800, 900, ..., 1900, 2000
H Height	550/250, 550/400
E4, Ød	200 (F=40), 250 (F=43), 315 (F=43)

HR-OG-2 Trapezoid canopy island installation, 2-parts, E4 - one exhaust air chamber

Section dimensions, mm

L Length	1000, 1100, ..., 2400, 2500
B Width	1600, 1800, ..., 3800, 4000
B1/B2 Width	800, 900, ..., 1900, 2000
H Height	550/250, 550/400
E1	200, 250, 315



Product marking

HR-OG - aSAP - LxBxH - E4= dxn - HFKxn - LED1670xn

Marking

- HR-OG - 1 section in width
- HR-OG-2 - 2 sections in width

aSAP

- aSAP - a Self Assembly Package

Dimensions

- L - Length
- B - Width
- H - Height

Exhaust air

- E4 - HFK filters in dual row
- Ød - Diameter of exhaust air connection
- n - Quantity of exhaust air connections

Grease filters

- HFK
- n - Grease filter quantity

Lighting

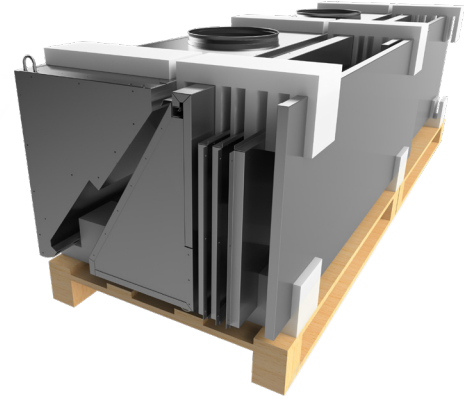
- LED-4000-600 - L=600, 17W, 4000K
- LED-3000-600 - L=600, 17W, 3000K
- LED-4000-1200 - L=1200, 34W, 4000K
- LED-3000-1200 - L=1200, 34W, 3000K
- DALI2-4000-600 - L=600, 20W, 4000K
- DALI2-3000-600 - L=600, 20W, 3000K
- DALI2-4000-1200 - L=1200, 37W, 4000K
- DALI2-3000-1200 - L=1200, 37W, 3000K
- SpotLED-3000 - 8W, 3000K
- SpotLED-4000 - 8W, 4000K
- n - Quantity of lighting fixtures

Example: HR-OG - 4000x3000x550 - E4=400x4 - HFKx24 - LED-4000-1200x2

HR Options & Accessories

aSAP Solution – a Self Assembly Package

- When access to the job site or kitchen space is limited, an ETS NORD aSAP self-assembly package can be the perfect solution.
- Narrow passageways and complex floor plans no longer get in the way!
- This is a compact, easy to ship, 5-step assembly version of our canopies to be put together at the job site.
- The canopy is delivered as ready-made modules with installation instructions.



CP Cover Plates

Cover plates are made of stainless steel (AISI 304, surface 2K). Cover plates are mounted in the area between the canopy and ceiling, when conduits and other components are to be concealed.

The height of the cover plates can be 50–1100 mm. When canopy is color coated, cover plates are also coated with the same color.

- CP-F – Front plate
- CP-B – Back plate
- CP-L – Left plate
- CP-R – Right plate



FET Filter Removal Tool

With the ETS NORD "Helping Hand" filter tool, professional kitchen operators can safely and easily service their UV cover plates, blind and grease filters. Helping Hand allows UV cover plates, blind and grease filters to be removed and replaced without the cumbersome need to climb on, or reach over the kitchen equipment. The daily filter washing process is significantly simplified, thus ensuring its completion by the responsible staff. The tools angle is fully adjustable, thereby enhancing ergonomic comfort.

The standard length of the handle is 1250 mm.



HFK Grease Filter

HFK is a high efficiency grease filter designed for use in ventilation hoods of commercial kitchens or other food production facilities. They are positioned in the hood exhaust plenum above cooking appliances (stoves, grills, etc.) and separate grease and other particles out from the exhaust air stream.

The ETS NORD HFK grease filter is protected by utility patent no. 01310.

- High efficiency captures 97% of 10 micron particles.
- Functions well even with variable air volume systems.
- Low pressure drop provides energy-efficient operation.
- Flame resistance class A according to DIN 18869-5.
- Easy to maintain.
- Grease particle separation is measured according to VDI 2052 standard.
- The HFK grease filter is certified according to UL 1046 requirements.



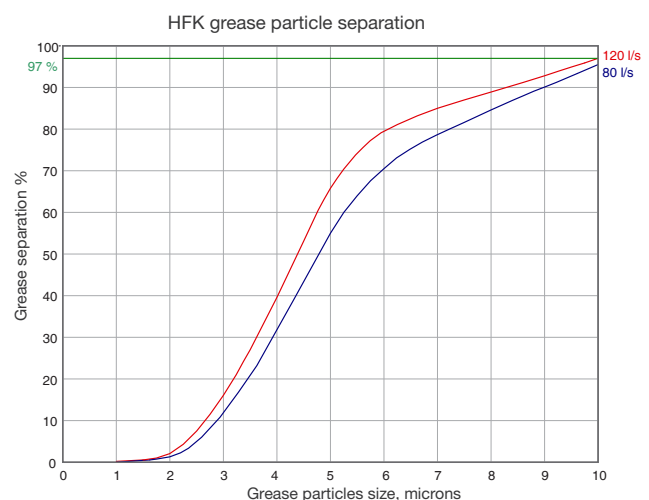
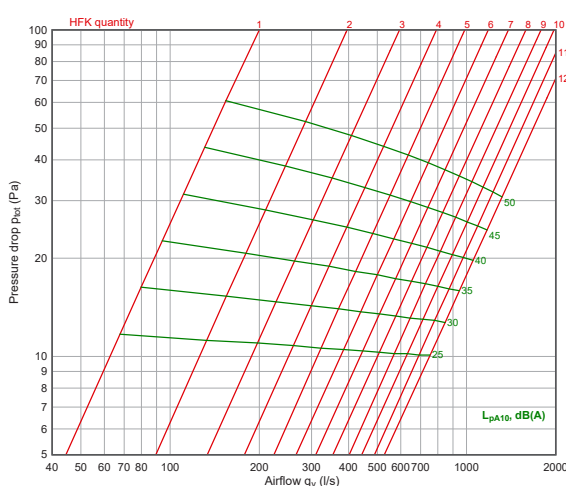
Material and design

HFK filters are manufactured from AISI 304 stainless steel. They are assembled with rivets to ensure their durability through many years of use in challenging kitchen environments.

Operation

The greasy effluent from cooking appliances is pulled through the openings in the front panel of the filter. Our patented double-triangular cross-section within the chamber causes a high speed centrifugal swirling of the air. The rapid change of trajectory of the grease particles causes them to collide with the filter surfaces, resulting in their effective separation from the air stream. The grease then drains from the filter down and into the grease collection channel of the hood. The filtered air continues on into the kitchen exhaust system through the top and bottom orifices of the filter.

The optimal operating conditions of the HFK Grease Filter are under a pressure drop from 12-48 Pa with an airflow through each filter from 70-130 l/s, ensuring an energy efficient operation.



Sound Attenuation of HFK

$$L_{w\text{okt}} = L_{pA} + K_{\text{okt}}$$

HFK	Sound level correction factor K_{okt} (dB)							
	Mean frequency of octave band (Hz)							
	63	125	250	500	1000	2000	4000	8000
K	4	3	0	1	0	-4	-15	-21



ETS NORD AS

Address: Peterburi tee 53
11415 Tallinn
Estonia
Phone: +372 680 7360
info@etsnord.ee
www.etsnord.ee

ETS NORD Finland

Address: Pakkasraitti 4
04360 Tuusula
Finland
Phone: +358 401 842 842
info@etsnord.fi
www.etsnord.fi

ETS NORD Sweden

Address: Järsjögatan 7
69235 Kumla
Sweden
Phone: +46 19 554 20 50
Address: Pinjegatan 5
21363 Malmö
Sweden
Phone: +46 40-94 68 70
Address: Förrådsvägen 5
151 58 Södertälje
Sweden
Phone: +46 8 550 301 40
info@etsnord.se
www.etsnord.se

ETS NORD International

info@etsnord.com
www.etsnord.com

ETS NORD Ventilation Manufacturing LLC UAE

Sepin Rayo
sepin.rayo@etsnord.com
+971 5257 02916



*Let's move the air **together!***