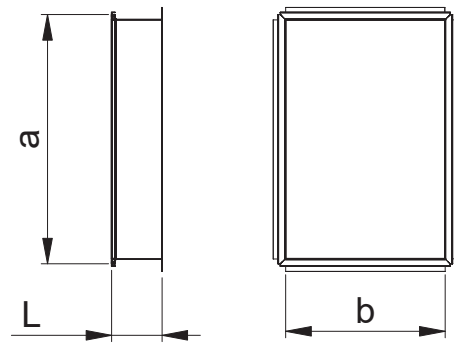
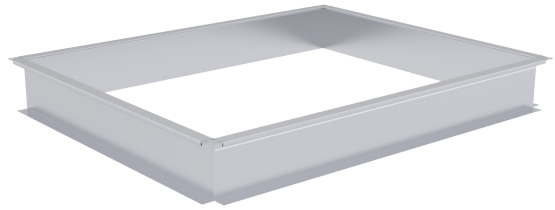


ESS-T Straight saddle

Straight saddle for a rectangular duct. Standard length 125 mm.

For connection the saddle is provided with E30-profile.



Product codes

	ESS-T	-	Material	-	A x B	-	(-)	-	L
Marking	_____								
Material	_____								
	Galvanized steel (DX51D+Z275), standard material ZM – zinc-magnesium coating (DX51D+ZM310)								
Nominal size A x B	_____								
Duct connection	_____								
	Standard E30-europrofile, not marked (-) - without a duct connection profile								
Length L	_____								

Example: **ESS-T 600x400-125**
 ESS-T 600x400(-)-125