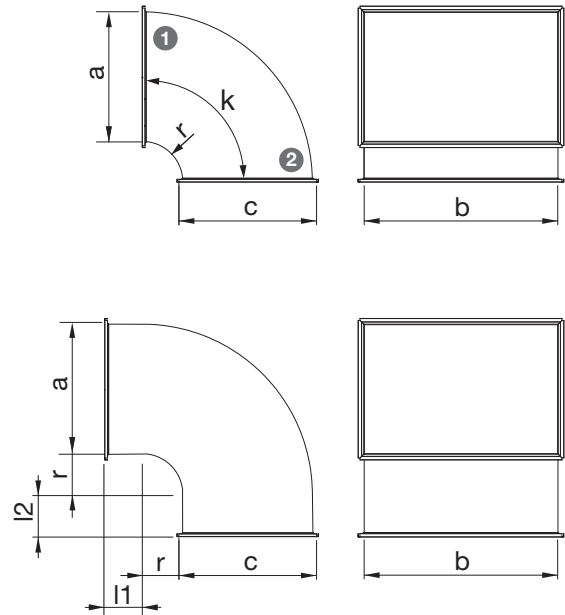


EKP-T Bend



A bend with a rounded external angle.
 In the event that side a > 400, the bend is provided with a reinforced guide.
 In the event that the bend angle is ≤ 45° there is no guide.
 For connection the bend is provided with flanges height 30 mm.

Product codes

	EKP-T	-	Materjal	-	A x B	-	C x B	-	k	-	r	-	l1/l2
Marking	_____												
Material	_____												
	Galvanized steel (DX51D+Z275), standard material ZM – zinc-magnesium coating (DX51D+ZM310)												
Dimensions A x B	_____												
Dimensions C x B	_____												
Angle k	_____												
Radius r	_____												
Length l1/l2	_____												

Example: EKP-T EKP 800x400/800x400-90-r=125-l1=300-l2=200