



NORDcanopy HT Exhaust Canopy

Solution for industrial areas

Standard material galvanized steel

Energy efficient LED lights

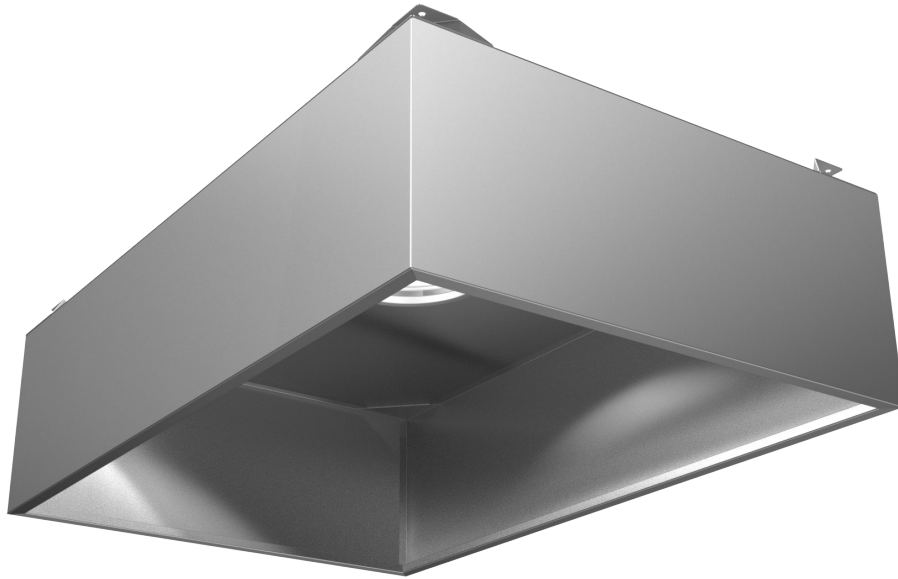
General

The NORDcanopy product portfolio consists of canopies and related air treatment products for use in commercial and industrial kitchen ventilation to create a comfortable and hygienic work environment.

Our products combine stylish design with highly effective grease, heat and odor removal performance for your project.

We at ETS NORD know that no projects are exactly alike. We have designed our canopies to be modular, so we can custom design and manufacture a NORDcanopy solution to meet your each and every project requirement or technical need.

HT Canopy



The HT Canopy is our most basic canopy for removing airborne particles and excess heat, ensuring a clean, hygienic and comfortable work environment. It is most suitable for industrial applications.

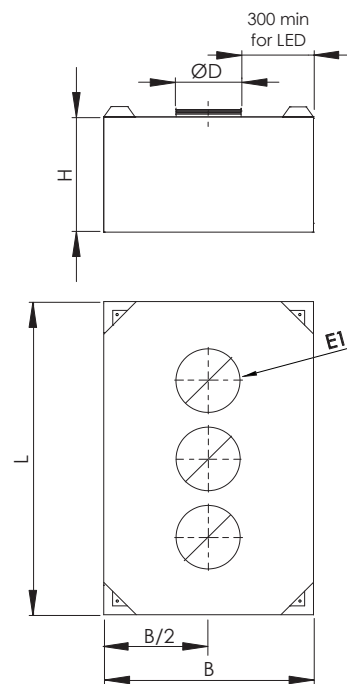
Material and Dimensions

The canopy is made standard from galvanized steel (DX51D+Z275) but can optionally be constructed from other materials.

We at ETS NORD know that no two customer requirements are exactly alike. We have designed our canopies to be modular, so we can custom design and manufacture a NORDcanopy solution to meet your each and every project requirement or technical need.

HT dimensions (mm)

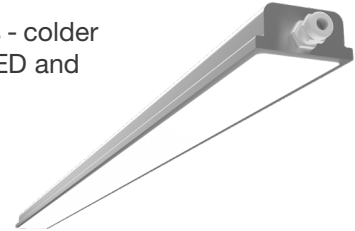
L Length	500-3000
B Width	500-800, (No lighting) 900-3000
H Height	200-1000
E1	100, 125, 160, 200, 315, 400



Lighting

ETS NORD professional kitchen canopies use the next generation of energy-efficient recessed LED fluorescent lamps and LED-Spot luminaires, which can save as much as 50% more energy compared to old technologies. Canopies include light fixtures integrated into their ceilings, protected by an aluminum and glass casing. The size and number of light fixtures are determined by the size of the canopy, to ensure there is enough light output for the entire workspace.

Our integrated LED and DALI luminaires have two color temperature options - colder 4000K and warmer 3000K. It is also possible to choose between regular LED and DALI2 (dimnable) luminaires.



Kitchen Light LED luminaries (standard), IP66

Canopy section length (mm)	Luminaries	Lighting length (mm)	Energy use (W)	Color temperature (K)	Color rendering index (Ra)	Flux (lm)
1000 ≤ L <1300	LED-4000-600	600	17	4000	90	2907
1000 ≤ L <1300	LED-3000-600	600	17	3000	90	2907
1400 ≤ L <2900	LED-4000-1200	1200	34	4000	90	6498
1400 ≤ L <2900	LED-3000-1200	1200	34	3000	90	6498

Kitchen Light DALI2 LED luminaries, IP66

Canopy section length (mm)	Luminaries	Lighting length (mm)	Energy use (W)	Color temperature (K)	Color rendering index (Ra)	Flux (lm)
1000 ≤ L <1300	DALI2-4000-600	600	20	4000	90	3000
1000 ≤ L <1300	DALI2-3000-600	600	20	3000	90	3000
1400 ≤ L <2900	DALI2-4000-1200	1200	37	4000	90	6000
1400 ≤ L <2900	DALI2-3000-1200	1200	37	3000	90	6000

Spot LED lighting fixtures, IP65

Light colour: 4000K (colder), 3000K (warmer)

Housing material: Aluminium

Colour separation index: > 80 (Ra)



Canopy length (mm)	Spot LED quantity	Energy use (W)	Flux 4000K (lm)	Flux 3000K (lm)	Radiation angle
1000 ≤ L <1200	2	16	1340	1240	36°
1300 ≤ L <1700	3	24	2010	1860	36°
1800 ≤ L <2300	4	32	2680	2480	36°
2400 ≤ L ≤2900	5	40	3350	3100	36°

Product Marking

HT - Zn - LxBxH - E1=dxn - XXXxn

Marking

HT

Material

- Zn - Galvanized steel sheet, DX51D+Z275
- ZM - Zinc-magnesium coated steel sheet, DX51D+ZM310
- R - Stainless steel, AISI 304
- H - Acid-proof steel, AISI 316

Dimensions

- L - Length
- B - Width
- H - Height

Exhaust air

- E1 - Exhaust air connection
- Ød - Diameter of exhaust air connection
- n - Quantity of exhaust air connections

Lighting

- LED-4000-600 - L=600, 17W, 4000K
- LED-3000-600 - L=600, 17W, 3000K
- LED-4000-1200 - L=1200, 34W, 4000K
- LED-3000-1200 - L=1200, 34W, 3000K
- DALI2-4000-600 - L=600, 20W, 4000K
- DALI2-3000-600 - L=600, 20W, 3000K
- DALI2-4000-1200 - L=1200, 37W, 4000K
- DALI2-3000-1200 - L=1200, 37W, 3000K
- SpotLED-3000 - 8W, 3000K
- SpotLED-4000 - 8W, 4000K
- n - Quantity of lighting fixtures

Example: HT - Zn - 2000x1000x550 - E=315x1 - LED-4000-1200x1

Masking plates:

Mounted in the area between canopy and ceiling, when conduits and other components are to be concealed.



ETS NORD AS

Address: Peterburi tee 53
11415 Tallinn
Estonia
Phone: +372 680 7360
info@etsnord.ee
www.etsnord.ee

ETS NORD Finland

Address: Pakkasraitti 4
04360 Tuusula
Finland
Phone: +358 401 842 842
info@etsnord.fi
www.etsnord.fi

ETS NORD Sweden

Address: Järsjögatan 7
69235 Kumla
Sweden
Phone: +46 19 554 20 50

Address: Pinjegatan 5
21363 Malmö
Sweden
Phone: +46 40-94 68 70

Address: Förrådsvägen 5
151 58 Södertälje
Sweden
Phone: +46 8 550 301 40
info@etsnord.se
www.etsnord.se

ETS NORD International

info@etsnord.com
www.etsnord.com

ETS NORD Ventilation Manufacturing LLC UAE

Sepin Rayo
sepin.rayo@etsnord.com
+971 5257 02916



Let's move the air together!