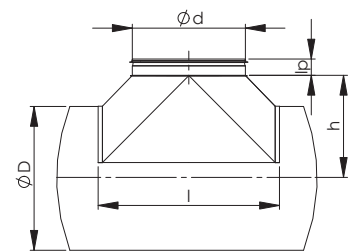
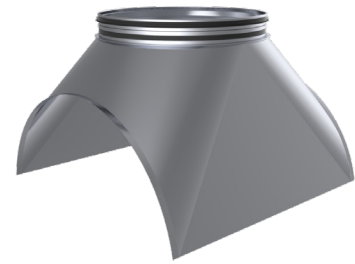


NPSV-T Saddle

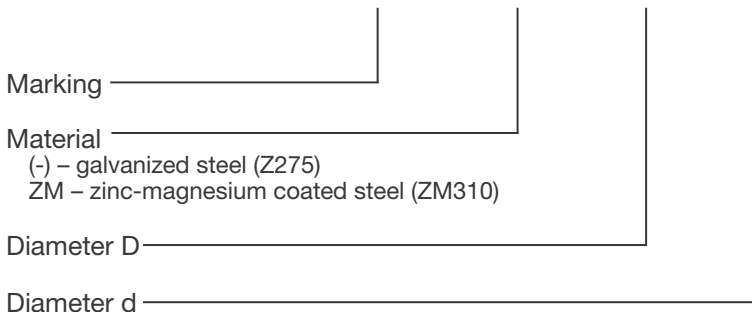
Segmented saddle with seal to fit round duct.

Nominal size D-d	l, mm	l _p , mm	h, mm	Weight, kg
400-400	625	50	300	2,9
500-400	636	50	355	3,2
500-500	720	51	350	3,9
630-400	636	50	410	3,2
630-500	733	51	370	4,7
630-630	866	51	420	5,7
800-400	636	50	505	3,5
800-500	720	51	510	4,6
800-630	850	51	520	6,2
800-800	1060	75	520	8,6
1000-500	713	51	600	4,9
1000-630	845	51	600	7,2
1000-800	1042	75	610	10,1
1000-1000	1252	89	615	15,3
1250-630	845	51	725	11,0
1250-800	1083	75	760	9,0
1250-1000	1251	89	745	15,0
1250-1250	1560	89	775	22,0



Product code

NPSV-T - ZM - D - d



Example:: NPSV-T 500-400