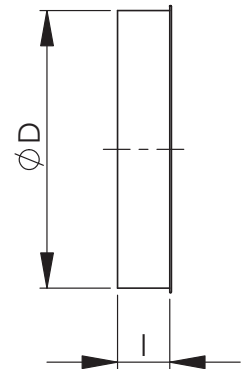


**NALM-T Female end cap**

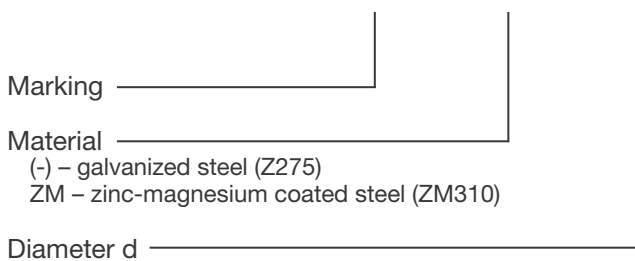
End cap for fitting.

Nominal size d	l, mm	Weight, kg
100	50	0,09
125	50	0,11
160	50	0,16
200	50	0,21
250	59	0,34
315	59	0,51
400	59	0,76
500	74	1,9
630	74	2,8
800	114	4,5
1000	114	8,5



**Product code**

NALM-T - ZM - d



Example: NALM-T 315