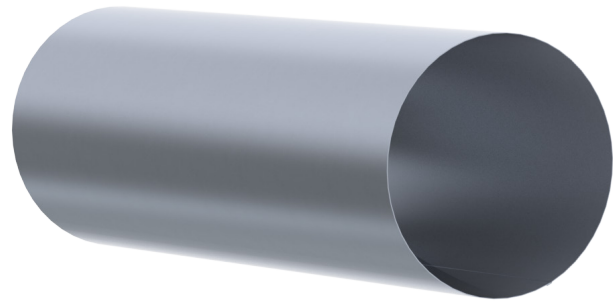
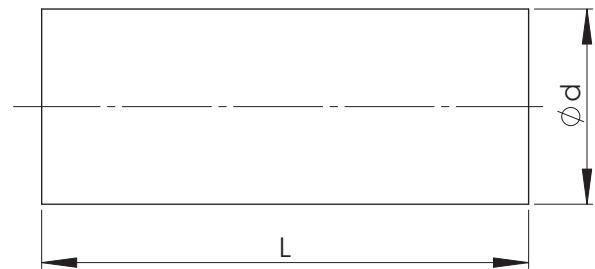


NTOV Ventilatsioon duct (lock seamed)

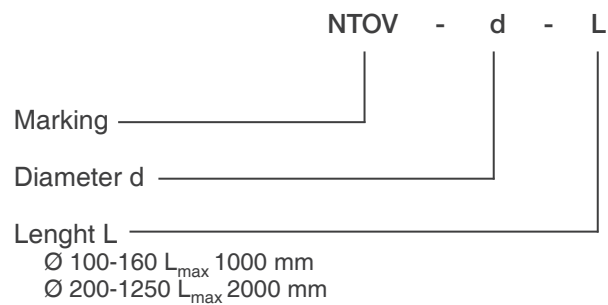
Round duct with horizontal outside seam.
 NTOV duct is manufactured of galvanized steel sheet. Ducts can also be manufactured of other materials and in other material thicknesses (max. 0,9 mm).
 Sizes Ø 100-160 mm maximum length 1000 mm and sizes Ø 200-1250 mm maximum length 2000 mm.



Nominal size d	Material thickness t, mm	Weight, kg/m
100	0,5	1,3
125	0,5	1,6
160	0,5	2,0
200	0,5	2,5
250	0,5	3,1
315	0,5	3,9
400	0,7	7,0
500	0,7	8,7
630	0,7	10,9
800	0,7	13,9
1000	0,9	22,3
1250	0,9	27,8



Product codes



Example: NTOV 315-1250