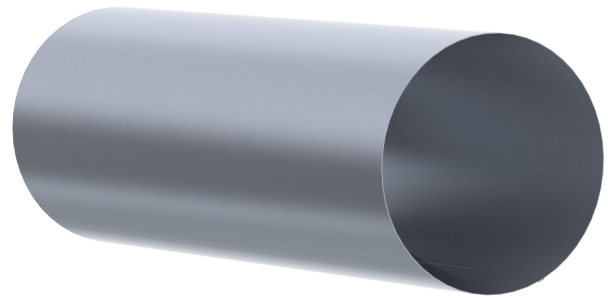
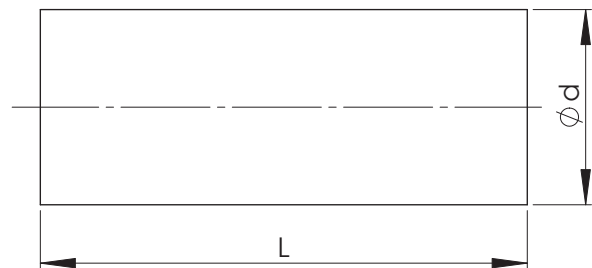


NTOP Ventilatsioon duct (welded)

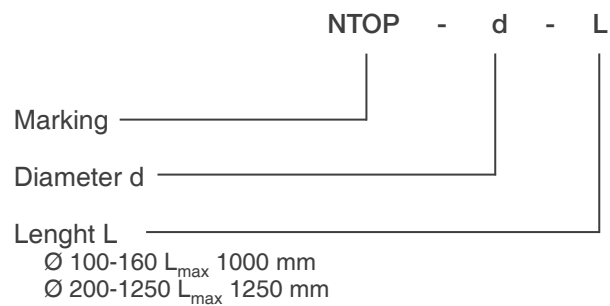
Round horizontally welded duct.
 NTOP duct is manufactured of galvanized steel sheet.
 Ducts can also be manufactured of other materials and in other material thicknesses (max. 0,9 mm).
 Duct sizes Ø 100-160 mm maximum length 1000 mm and sizes Ø 200-1250 mm maximum length 1250 mm.



Nominal size d	Material thickness t, mm	Weight, kg/m
100	0,5	1,3
125	0,5	1,6
160	0,5	2,0
200	0,5	2,5
250	0,5	3,1
315	0,5	3,9
400	0,7	7,0
500	0,7	8,7
630	0,7	10,9
800	0,7	13,9
1000	0,9	22,3
1250	0,9	27,8



Product codes



Example: NTOP 315-1250