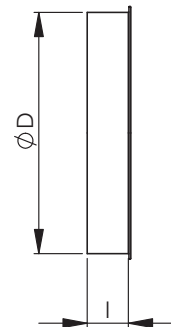
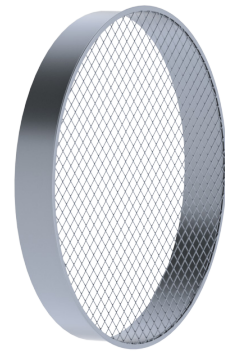


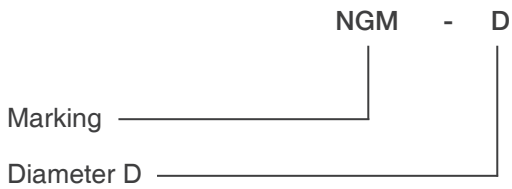
**NGM Take-off with mesh for fitting**

Take-off equipped with a mesh is used at the end of the air supply and exhaust duct.

| Nominal size<br>d | l,<br>mm | Weight,<br>kg |
|-------------------|----------|---------------|
| 100               | 39       | 0,1           |
| 125               | 39       | 0,13          |
| 160               | 39       | 0,17          |
| 200               | 39       | 0,25          |
| 250               | 58       | 0,4           |
| 315               | 58       | 0,5           |
| 400               | 55       | 0,8           |
| 500               | 70       | 1,1           |
| 630               | 70       | 1,4           |
| 800               | 103      | 2,4           |
| 1000              | 103      | 3,7           |
| 1250              | 103      | 4,6           |



**Product codes**



Example: NGM 315