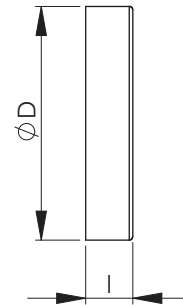
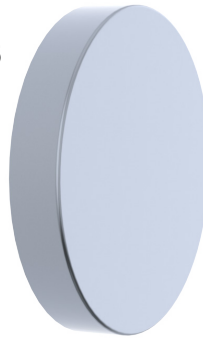


**NALM Tulppa osalle**

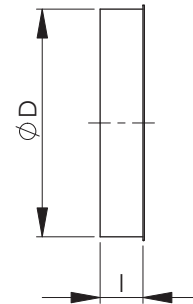
Tulppa kanavaosalle.

Nimellismitta		Paino, kg
D	l, mm	
100	40	0,09
125	40	0,11
160	40	0,16
200	40	0,21
250	40	0,34
315	40	0,51
400	60	0,76
500	75	1,9
630	75	2,8
800	115	4,5
1000	115	8,5
1250	115	12,5

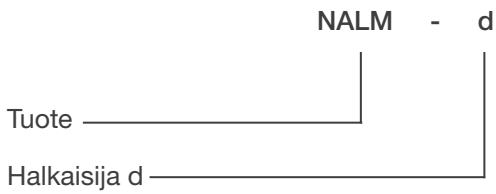
100-315



400-1250



**Tuotemerkintä**



Esimerkki: NALM 315