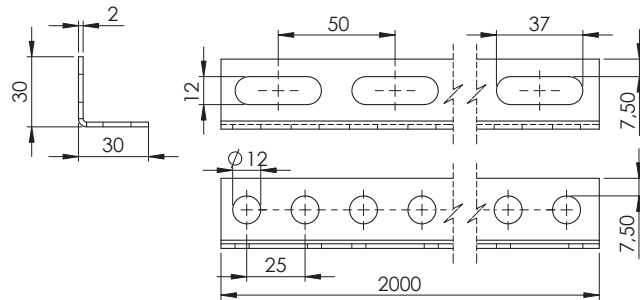
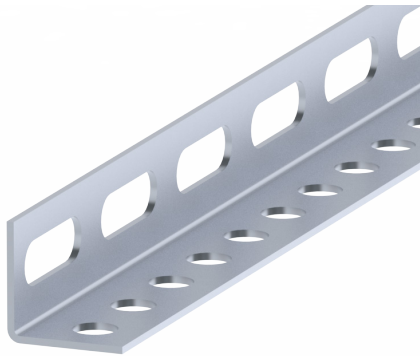


Mounting Rails, L-profile



The L-profile is mainly used to reinforce, support or hang ventilation ducts and equipment in vertical or horizontal installation. Suitable for use in the corrosivity category C2.

- Simple and secure installation
- Can be cut to size
- Made from galvanized steel sheet
- Length 2000 mm

L-profile 30x30x2

F_n kN

