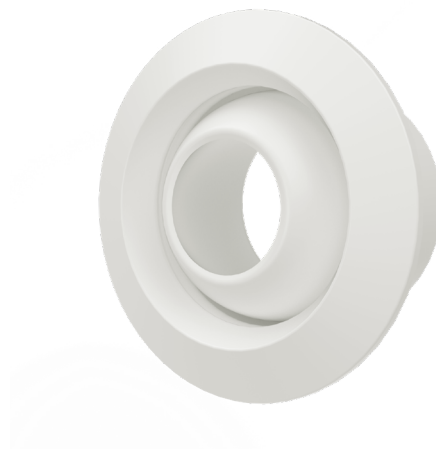


DJM Nozzle diffuser

The DJM is a jet nozzle diffuser designed to provide effective supply air distribution due to its high initial velocity and long throw length. The nozzles are designed to allow the air jet to be directed at different angles.

Jet nozzles are suitable for use in commercial and industrial applications, making them ideal for large areas such as theaters, cinemas, concert halls, train stations, and airports. They can be installed for both horizontal and vertical air supply.

- Nozzles can be rotated by $\pm 30^\circ$
- Long throw length
- Low sound level
- Easy to clean
- Can be installed straight to the duct or on the flat surface
- Duct sizes $\text{Ø}100\text{-}500$ mm



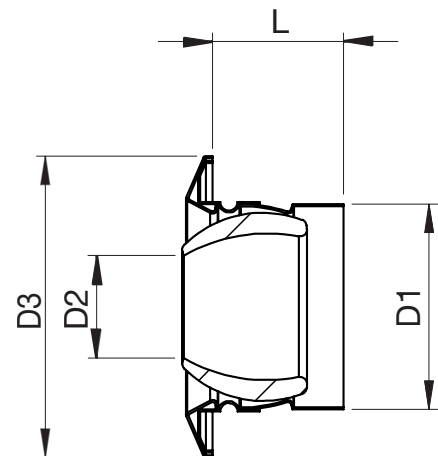
Function

Fresh air is supplied to the room at a high initial velocity, causing a significant mixing effect with the room air due to the strong induction effect. The jet nozzle design allows the supply air jet to be adjusted by directing the nozzle at up to 30 degrees in any direction within a 360-degree roll. This versatility makes the product suitable for both cooled and heated air applications.

Material and surface treatment

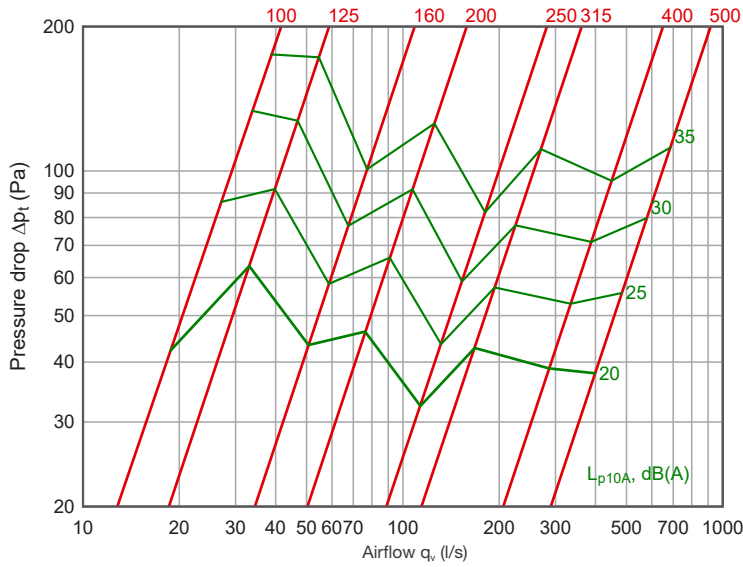
DJM body and nozzle is manufactured from aluminium. The jet nozzle diffuser has a standard white (RAL 9003) finish.

Nominal size	ØD1 (mm)	ØD2 (mm)	ØD3 (mm)	L (mm)
100	98	45	139	63
125	122	61	172	72
160	157	80	210	91
200	197	105	265	107
250	247	128	314	135
315	312	165	390	174
400	397	210	495	218
500	497	256	622	259

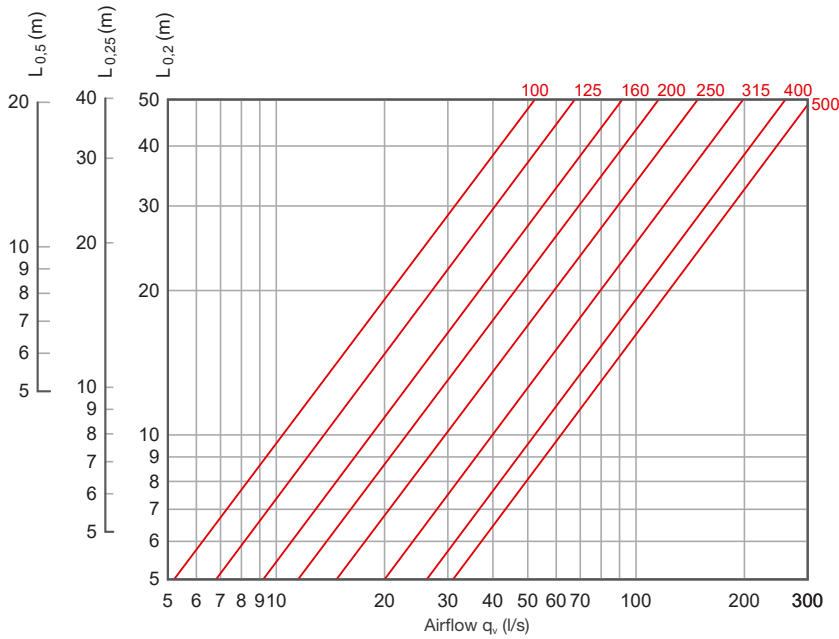


Technical data

Pressure loss and sound data

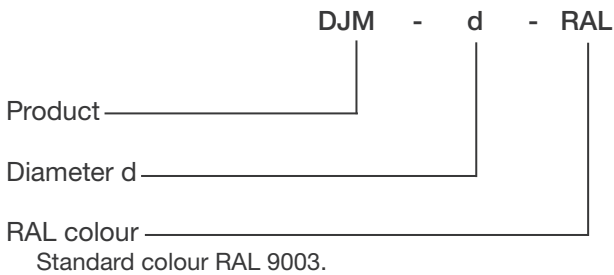


Throw length



* Given throw length corresponds to isothermal conditions.

Product marking



Example: DJM 200