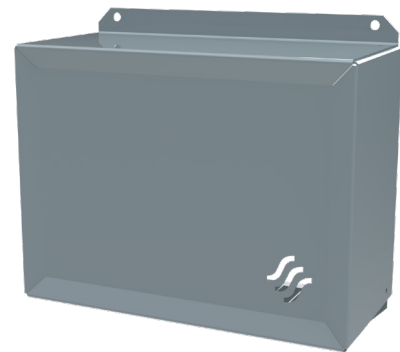


RVNS Nordic Intake grille

- Innovative air intake grille for wall mounting
- Compact design that integrates discreetly into the building façade
- Bottom air intake prevents water and snow from entering the intake duct
- Galvanized steel housing with powder coating ensures high weather resistance



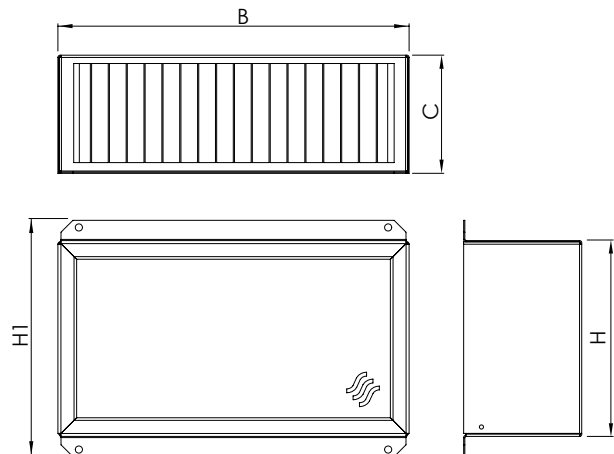
Application

With the RVNS-grille, air intake can be implemented through the wall surface. The product is particularly suitable for apartment-based and other small ventilation units where space efficiency and façade integration are important.

Structure and dimensions

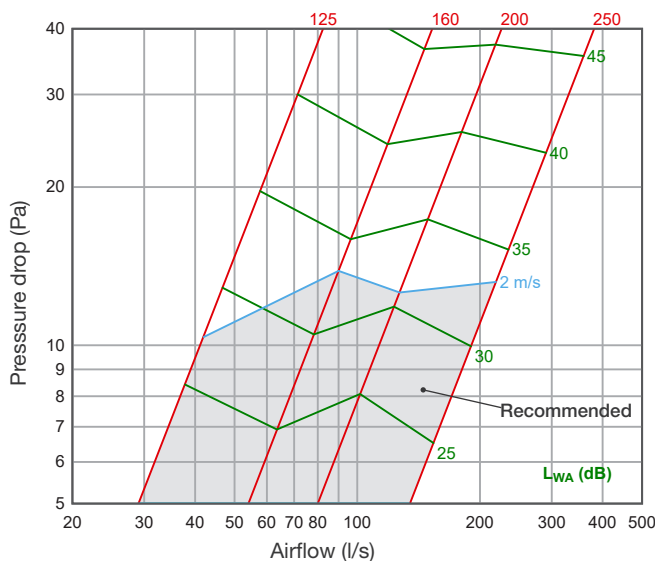
RVNS grilles are manufactured as standard from hot-dip galvanized steel (Z275) and finished in grey (RAL 7000). Custom orders are available in all RAL colours.

Product	B (mm)	H (mm)	H1 (mm)	C (mm)	Weight (kg)
RVNS 125	295	164	198	99	1,1
RVNS 160	383	196	233	148	1,8
RVNS 200	423	239	273	297	2,6
RVNS 250	533	287	323	267	4,2



Technical data

RVNS - Intake air



Acoustic data

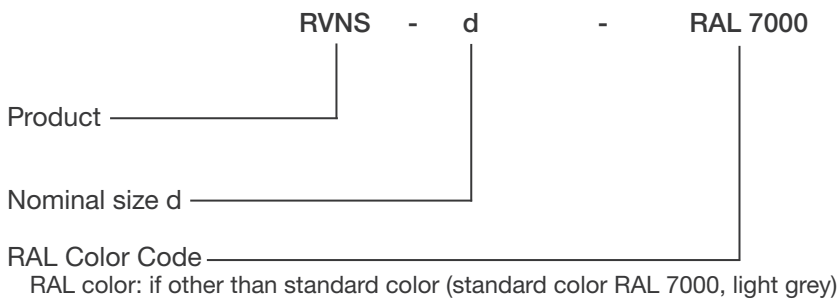
$$L_w = L_{wA} + K_{okt}$$

RVNS, intake air	Sound level correction factor K _{okt} (dB)							
	Mean frequency of octave band (Hz)							
	63	125	250	500	1k	2k	4k	8k
RVNS 125	3	-4	-2	-1	-4	-12	-17	-19
RVNS 160	4	-4	0	-2	-9	-16	-21	-18
RVNS 200	6	-1	0	-2	-8	-13	-17	-14
RVNS 250	9	1	2	-4	-11	-15	-18	-14

Sound attenuation

RVNS, intake air	Sound attenuation D _{okt} (dB)							
	63	125	250	500	1k	2k	4k	8k
RVNS 125	21	14	7	3	8	5	3	4
RVNS 160	18	11	4	8	9	4	3	4
RVNS 200	14	10	4	11	6	3	3	4
RVNS 250	15	7	2	9	4	2	2	4

Product marking



Example: RVNS 160 RAL7000