

UVS Roof Hood

UVS is an exhaust air diffuser with rectangular connection. Diffuser structural heights have been reduced to minimum so that the diffuser blends in with roof and is unnoticeable. Designed and tested to withstand Nordic climate conditions.

- Innovative design
- Aesthetic, does not dominate architecture
- Good water resistance
- Long vertical exhaust pattern
- Strong structure
- Standard dimensions
- Low pressure drop
- Low sound level
- Magnelis® steel sheet, corrosivity category is C4
- Sustainable

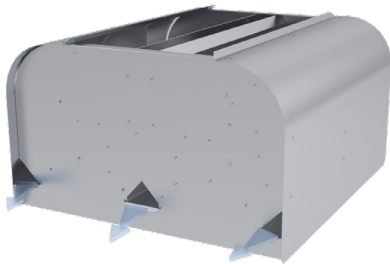
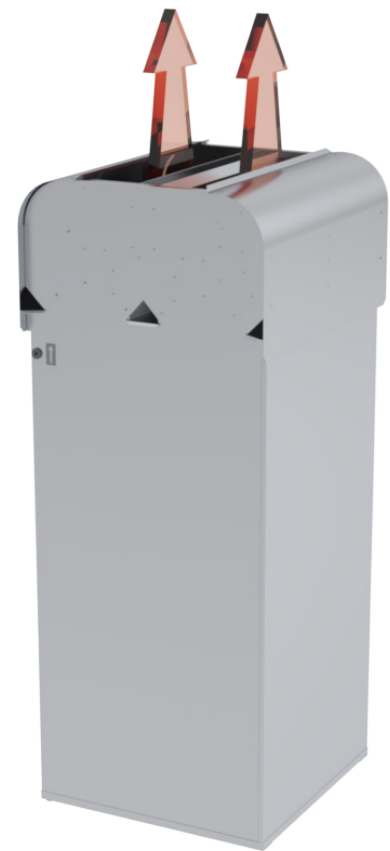


Application

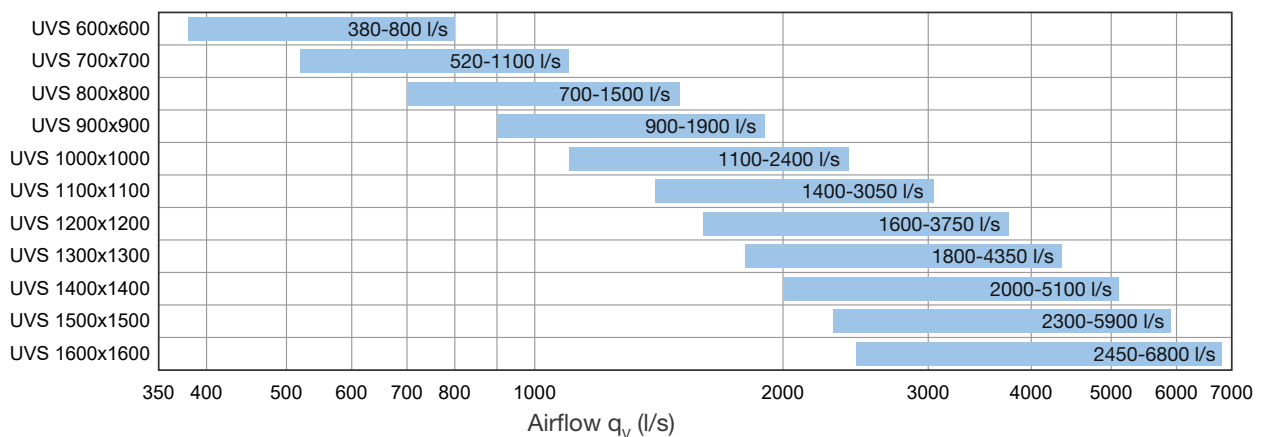
The UVS roof diffuser is designed to exhaust the air straight up at a high velocity.

UVS roof hood is innovative, as its dimensions are modest. It does not dominate architecture and can be used in places where visual aspect is important.

Design of the exhaust air diffuser efficiently prevents rainwater from entering the ventilation system. Rainwater is drained onto the roof from the sides of the unit.

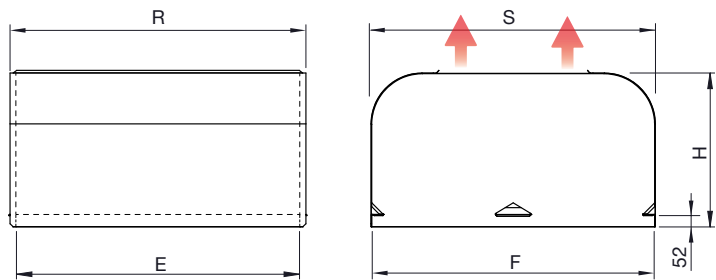


Quick Selection



Material and Dimensions

Manufactured of Magnelis® sheet steel (ZM310). In special order can also be manufactured of acidproof steel (AISI 316L) or in powder coated finish (RAL colorcard).



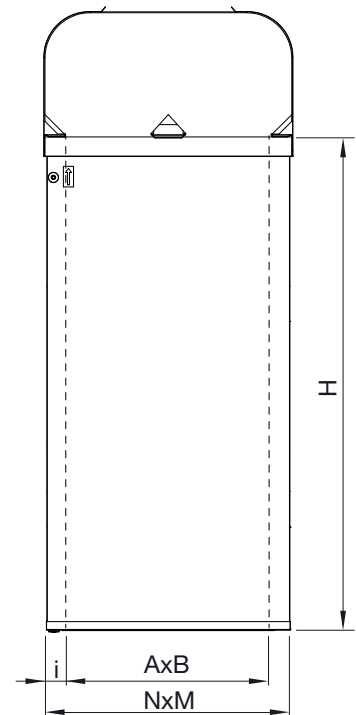
UVS roof hood for exhaust air

Nominal size ExF (mm)	ExF (mm)	R (mm)	S (mm)	H (mm)	Weight (kg)	Free area (m²)	Volume (m³)	Airflow (l/s)	
								Min	max
600x600	602	656	606	353	15	0,17	0,13	380	800
700x700	702	756	706	403	20	0,24	0,20	520	1100
800x800	802	856	806	453	25	0,31	0,29	700	1500
900x900	902	956	906	503	32	0,40	0,41	900	1900
1000x1000	1002	1056	1006	552	39	0,50	0,56	1100	2400
1100x1100	1102	1156	1106	601	46	0,61	0,73	1400	3050
1200x1200	1202	1256	1206	653	54	0,73	0,95	1600	3750
1300x1300	1302	1356	1306	701	66	0,86	1,19	1800	4350
1400x1400	1402	1456	1406	750	75	1,00	1,48	2000	5100
1500x1500	1502	1556	1506	800	85	1,16	1,81	2300	5900
1600x1600	1602	1656	1606	853	96	1,32	2,19	2450	6800

UVS roof hood for exhaust air for installation with MKL roof transition will provide the best possible combination for water resistance.

MKL-3 with 50 mm insulation (H=1200).

UVS Nominal size ExF (mm)	MKL Nominal size (NxM)	NxM (mm)	AxB (mm)	MKL-3 weight (kg)
600x600	600x600	595x595	500x500	34
700x700	700x700	695x695	600x600	39
800x800	800x800	795x795	700x700	50
900x900	900x900	895x895	800x800	62
1000x1000	1000x1000	995x995	900x900	65
1100x1100	1100x1100	1095x1095	1000x1000	73
1200x1200	1200x1200	1195x1195	1100x1100	78
1300x1300	1300x1300	1295x1295	1200x1200	83
1400x1400	1400x1400	1395x1395	1300x1300	88
1500x1500	1500x1500	1495x1495	1400x1400	111
1600x1600	1600x1600	1595x1595	1500x1500	121



Installation opening
= (N+20)×(M+20) mm

For more information about MKL roof transition and different insulation possibilities please check MKL datasheet.

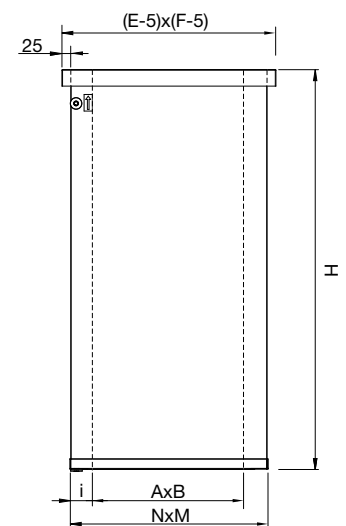
UVS roof hood with rain-plate and MKL roof transition with rain-plate collar (KL).

MKL with 50 mm insulation.

UVS Nominal size ExF (mm)	MKL (i=50 mm)		
	MKL+KL Nominal size (N×M KL-ExF) (mm)	AxB (mm)	N×M (mm)
600x600	MKL 550x550 KL-600x600	450x450	550x550
700x700	MKL 650x650 KL-700x700	550x550	650x650
800x800	MKL 750x750 KL-800x800	650x650	750x750
900x900	MKL 850x850 KL-900x900	750x750	850x850
1000x1000	MKL 950x950 KL-1000x1000	850x850	950x950
1100x1100	MKL 1050x1050 KL-1100x1100	950x950	1050x1050
1200x1200	MKL 1150x1150 KL-1200x1200	1050x1050	1150x1150
1300x1300	MKL 1250x1250 KL-1300x1300	1150x1150	1250x1250
1400x1400	MKL 1350x1350 KL-1400x1400	1250x1250	1350x1350
1500x1500	MKL 1450x1450 KL-1500x1500	1350x1350	1450x1450
1600x1600	MKL 1550x1550 KL-1600x1600	1450x1450	1550x1550

MKL with 100 mm insulation.

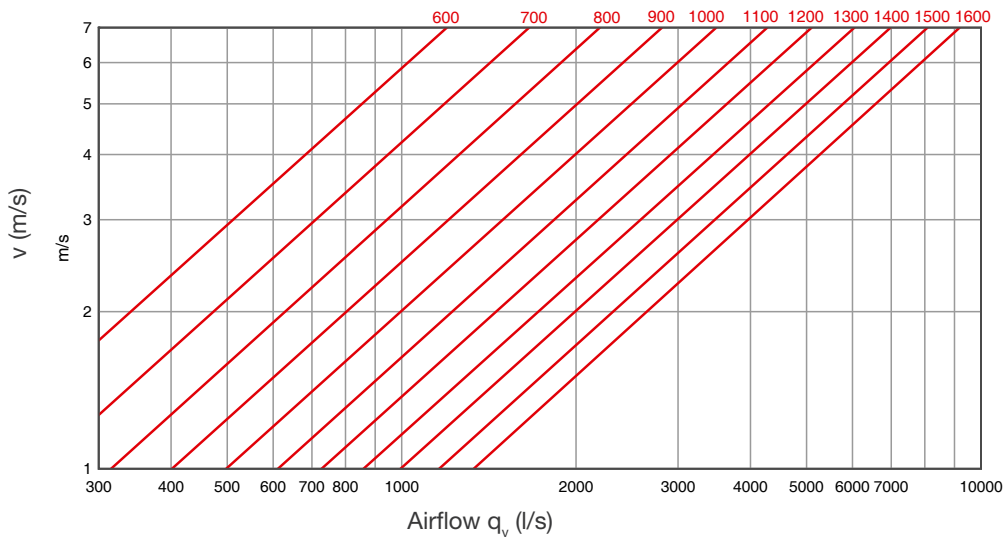
UVS Nominal size ExF (mm)	MKL (i=100 mm)		
	MKL+KL Nominal size (N×M KL-ExF)(mm)	AxB (mm)	N×M (mm)
600x600	MKL 550x550 KL-600x600	350x350	550x550
700x700	MKL 650x650 KL-700x700	450x450	650x650
800x800	MKL 750x750 KL-800x800	550x550	750x750
900x900	MKL 850x850 KL-900x900	650x650	850x850
1000x1000	MKL 950x950 KL-1000x1000	750x750	950x950
1100x1100	MKL 1050x1050 KL-1100x1100	850x850	1050x1050
1200x1200	MKL 1150x1150 KL-1200x1200	950x950	1150x1150
1300x1300	MKL 1250x1250 KL-1300x1300	1050x1050	1250x1250
1400x1400	MKL 1350x1350 KL-1400x1400	1150x1150	1350x1350
1500x1500	MKL 1450x1450 KL-1500x1500	1250x1250	1450x1450
1600x1600	MKL 1550x1550 KL-1600x1600	1350x1350	1550x1550



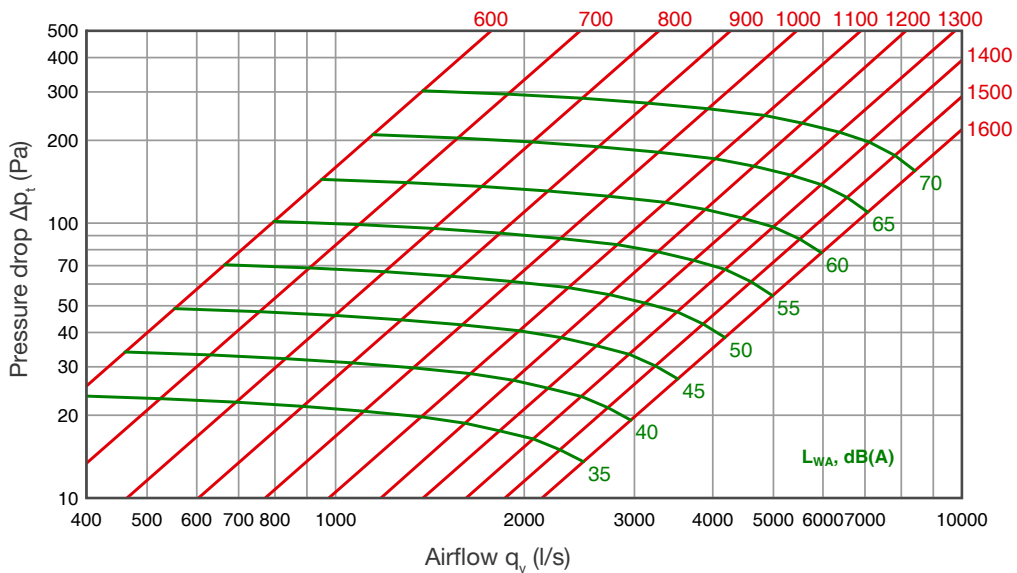
Installation opening =
(N+20)×(M+20) mm

Technical Data

Exhaust air speed



Pressure drop - Airflow - Exhaust air

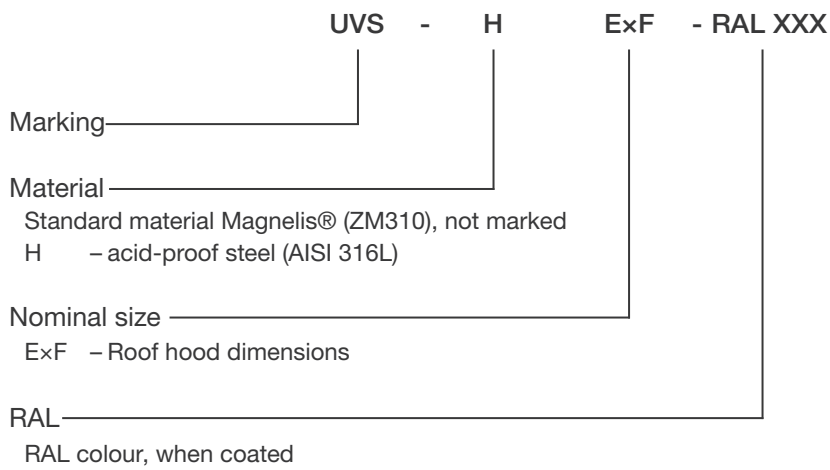


Rain water effectiveness

Airflow		Rain water flow rates			Performance	
q_v (m ³ /s)	v (m/s)	q_s (l/h/m ²)	q_{do} (l/h)	q_d (l/h)	E (%)	Class
0	0	75	13,53	0,18	98,7	B
0,32	0,5	75	12,44	0,06	99,5	A
0,64	1,0	75	11,27	0,00	100,0	A
0,96	1,5	75	10,12	0,00	100,0	A
1,28	2,0	75	8,78	0,00	100,0	A
1,92	3,0	75	6,53	0,00	100,0	A

- q_v - Air flow rate, m³/s
- v - Core velocity, m/s
- q_s - Rainfall rate, l/h/m²
- q_{do} - Rain water flow penetrating the core area, l/h
- q_d - Rain water flow penetrating the device, l/h
- E - Effectiveness, %

Product Marking



- Example:**
- UVS 800x800 Roof hood
 - UVS 800x800-RAL 7000 Roof hood
 - UVS-H 800x800 Roof hood (AISI 316L)