

KRTK Alternating shut-off damper

KRTK types of dampers are used for shut-off and regulating of air flow in low- to medium-pressure and velocity round duct systems. The damper consists of an extended T-piece and two linked damper blades, so it can be used as bypass damper.

Casing tightness class B and shut-off tightness class 2 according to standard EVS-EN 1751:2014.

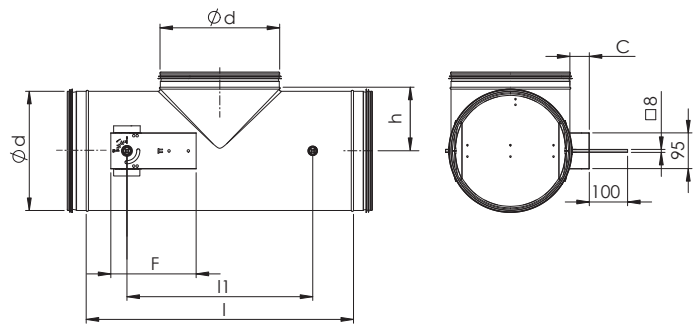


Structure and dimensions

KRTK damper casing and blades are manufactured of galvanized steel. Damper ends are equipped with rubber gasket. Can also be manufactured of other materials.

For automatic regulation of air flow, various motors can be used. For manual regulation, a handle can be installed.

See: Accessories.







Nominal size d mm	l	l1	h	F	C	Weight, kg	Recommended actuator	
							Without spring	Spring return
100	275	195	70	170	30	1,3	LM24A/LM230A	LF24/LF230
125	345	250	83	170	38	1,7	LM24A/LM230A	LF24/LF230
160	380	290	104	170	45	2,2	LM24A/LM230A	LF24/LF230
200	480	350	128	170	30	3,1	LM24A/LM230A	LF24/LF230
250	540	400	153	225	36	4,2	NM24A/NM230A	NFA24/NFA230
315	695	490	191	225	40	5,6	NM24A/NM230A	NFA24/NFA230
400	865	575	233	225	43	9,0	NM24A/NM230A	NFA24/NFA230

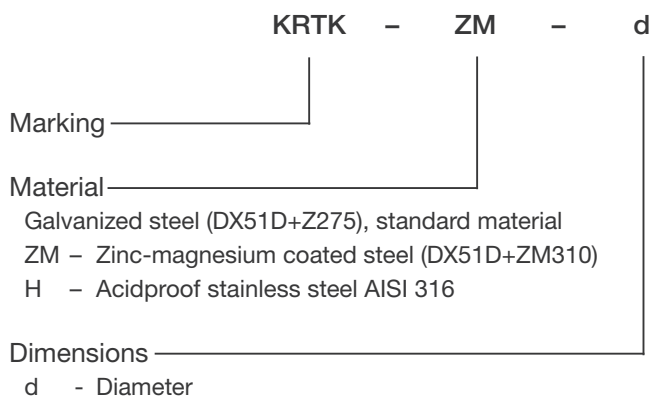
NB! Damper weights do not include the weight of actuators

Belimo actuators: consider surface area of the blade, structure, installation and air flow.

N.B. Belimo actuators manuals: www.belimo.com.

	Without spring		Spring return	
				
	LM...A	NM...A	LF	NFA
Torque	5 Nm	10 Nm	4 Nm	10 Nm
Weight	0,65 kg	0,77 kg	1,5 kg	2,1 kg

Product marking



Example: KRTK 315

Accessories

Handle - can be ordered with all dampers.

Installation

The damper have to connect to the duct and secure with rivets (see "NORDduct installation instructions").

For electric installations, see: www.belimo.com.

When an electric actuator is used, connect the power supply according to the wiring diagram.

See www.belimo.com.