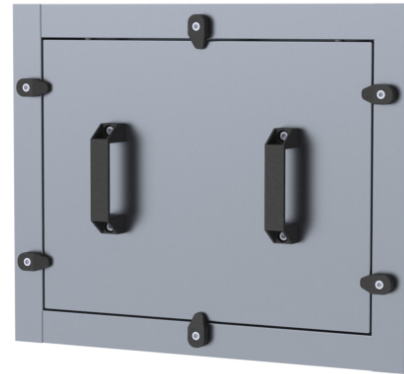


**TLTK Maintenance Door**

Maintenance door for duct and chamber.

**Features:**

- Suitable for insulated duct and chamber
- Meets tightness class C requirements
- Adjustable quick releases
- Also sound, heat and fire insulated
- Easy and fast installation
- Back-folded edges



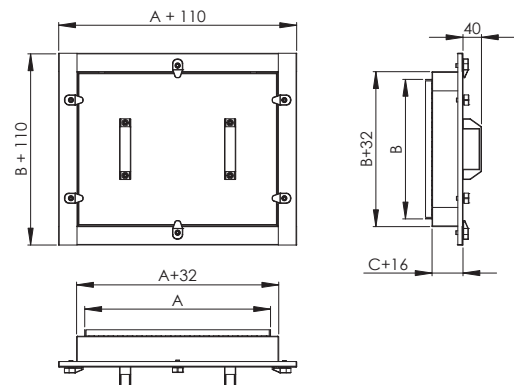
**Application**

For installation in duct system for inspecting and cleaning ducts. Maintenance door should be installed in a location with easy access to smoke and fire dampers.

**Material and Dimensions**

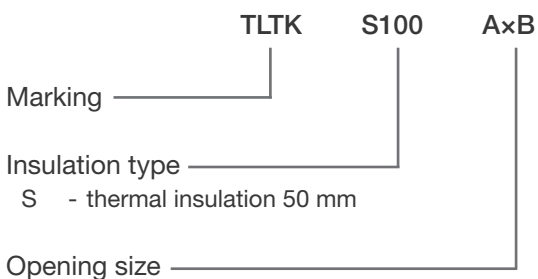
TLTK is manufactured of galvanized steel sheet. Also available in other materials. Frame equipped with inner and outer gasket. Used fire insulation meets the testing methods requirements according to EN 1366-1. Fire insulation strengths in accordance with EN 13501-1.

Nominal size AxB (mm)	A1 (mm)	B1 (mm)	Fixing points
TLTK 300x200	330	230	2
TLTK 400x200	430	230	4
TLTK 400x300	430	330	6
TLTK 400x400	430	430	6
TLTK 500x400	530	430	6
TLTK 500x500	530	530	6
TLTK 600x500	630	530	6
TLTK 600x600	630	630	6



**Product Marking**

TLTK maintenance door is manufactured according to nominal measurements of the door.



**Example: TLTK S100 1000x1000**

**Installation instructions**

1. Cut the hole into the insulated channel outer shell 30 mm larger hole than the door Nominal size and into the inner-shell hole with door nominal sizes.
2. Make sure that the hole is quadrilateral and the duct is rigid enough.
3. Place the door frame in the hole and tap the edges of the door to fix into the duct. Make sure that the edges are tightly bent back and that the seal is in good condition.
4. Place the door into the frame and close the quick fixes (NB: Do not tighten the fasteners too hard).