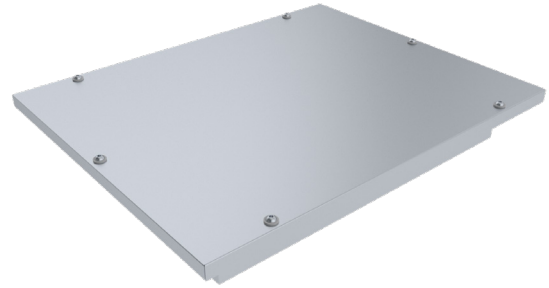


TLTE Insulated Maintenance Door for Flat Surface

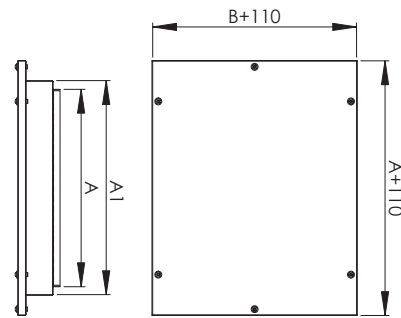
Insulated maintenance door for rectangular duct and flat surfaces.

Maintenance doors meet tightness class B requirements (EN 12237:2003).

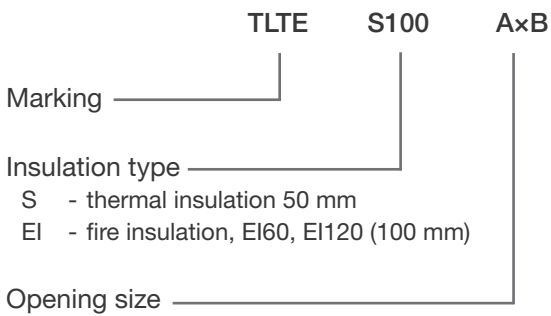
Used fire insulation meets the testing methods requirements according to EN 1366-1. Fire insulation strengths in accordance with EN 13501-1.



Cutting dimensions (mm)			
A	B	A1	B1
300	100	332	132
400	200	432	232
400	300	432	332
500	400	532	432
600	500	632	532



Product Marking



Example: TLTE S100 400x200