

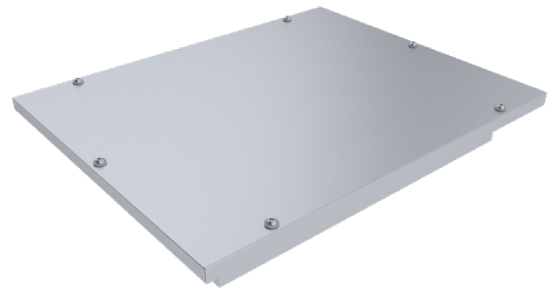
TLTE-T Insulated Maintenance Door for Flat Surface

Insulated maintenance door for insulated rectangular standard and smoke extraction ducts.

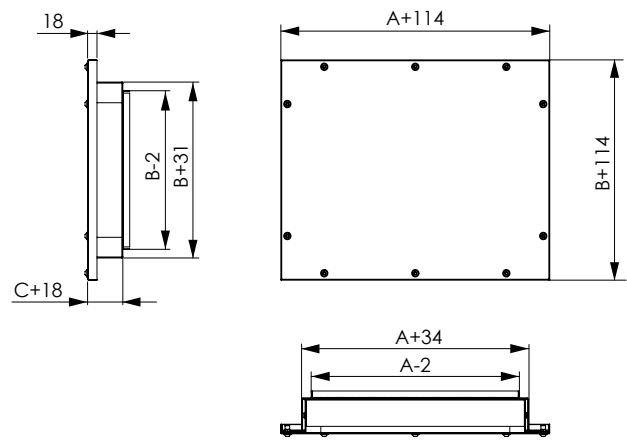
The mounting frame of the maintenance door is attached to the rectangular duct. The door is removable from the frame using hexogan bolts.

The maintenance doors comply with the requirements airtightness class B according to standard EVS-EN 12237:2003.

The fire insulation used meets the testing method requirements of standard EN 1366-1 and is certified by VTT. Fire resistance is classified according to standard EN 13501-1.

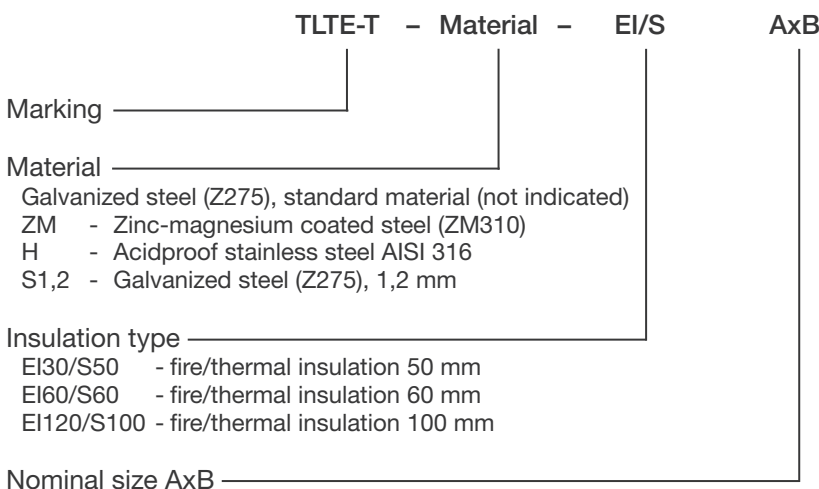


Nominal size (mm)	
A	B
200	100
200	200
300	100
300	200
300	300
400	200
400	300
400	400
500	300
500	400
500	500
600	200
600	300
600	400
600	500
600	600
700	700
800	600
800	800



C = insulation thickness
 For EI30/S50, 50 mm
 For EI60/S60, 60 mm
 For EI120/S100, 100 mm

Product Marking



Example: TLTE-T - EI120/S100 600x500
 TLTE-T - H - EI30/S50 300x300
 TLTE-T - S1,2 - EI30/S50 300x300