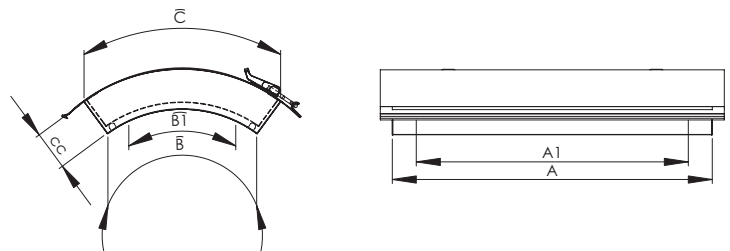
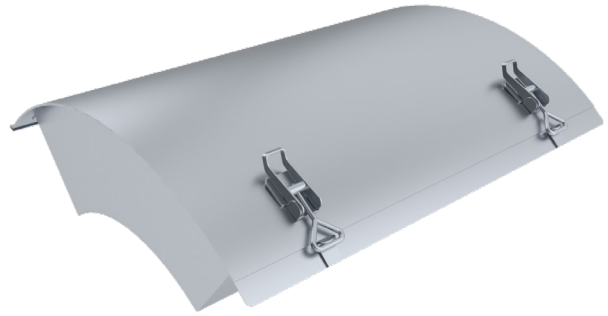


TLPE Insulated Maintenance Door

TLPE insulated maintenance door for round ventilation duct.

Maintenance doors meet requirements for tightness class C (EVS-EN 12237:2003).

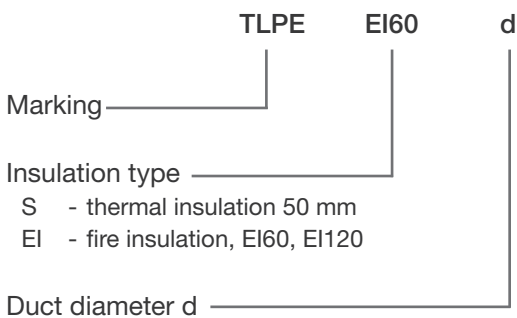
Used fire insulation meets the testing methods requirements according to EN 1366-1. Fire insulation strengths in accordance with EN 13501-1.



Measurements

Nominal size (mm)	C					Opening size A1xB1 (mm)
	A (mm)	B (mm)	cc=50 mm	cc=80 mm	cc=100 mm	
100	240	120	235	304	350	180x80
125	240	120	220	280	320	180x80
160	240	120	195	240	270	180x80
200	400	200	300	360	400	340x140
250	400	200	275	320	350	340x140
315	400	200	265	304	330	340x140
400	400	260	325	364	390	340x200
500	400	260	315	348	370	340x200
630	500	400	465	504	530	440x340
800	500	400	455	488	510	440x340
1000	500	400	445	472	490	440x340
1250	500	400	435	456	470	440x340

Product Marking



Example: TLPE EI60 315