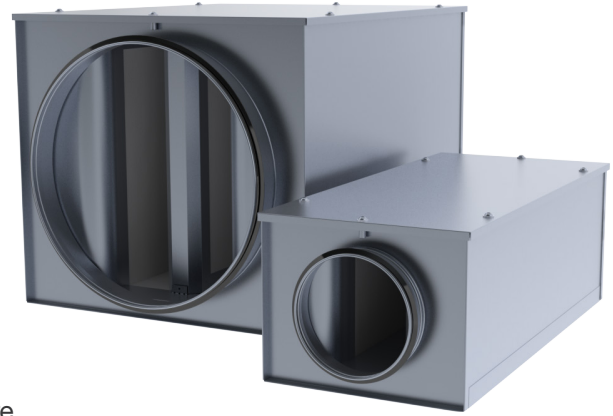


## NTPA Round Openable Silencer

NTPA – openable rectangular silencer with round duct connections and without perforated sheet inside. Suitable for general ventilation system silencer, especially in situations where the silencer dimensions should be smaller and the absorption values should be good.



**Advantages:**

- Silencer's dimensions are minimized while maintaining excellent noise reduction characteristics.
- Low pressure drop due to streamlined geometry.
- Insulation material is resistant to cleaning (nylon brush).
- Insulation material coating does not absorb moisture.
- Used as a cleaning and inspection door.



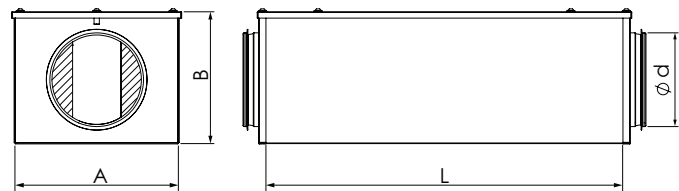
### Design and Dimensions

NTPA-silencer's outer shell is made of galvanized sheet steel. Connections are with rubber gaskets. Sound absorption duct element with good attenuation characteristics is made from synthetic material. Used synthetic insulation is classified as M1.

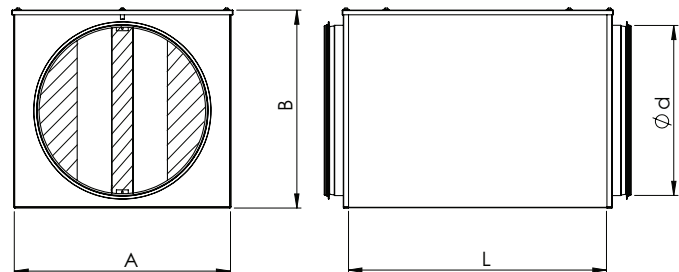
Silencers with Ø 400-630 include also separate absorption element.

Standard lengths 300, 600 and 1000 mm.

Ø 100-315



Ø 400-630



### Sound Attenuation

Sound attenuation is specified to ISO 7235, i.e. static integral attenuation for duct products.

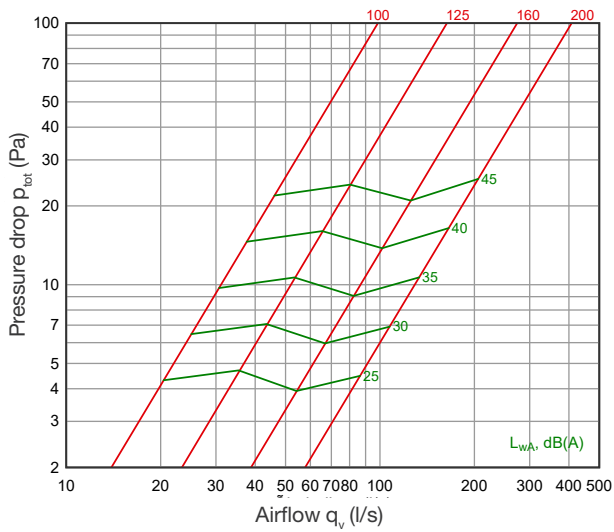
NTPA (absorption material synthetic sound insulation)

Nominal size Ød (mm)	L (mm)	A (mm)	B (mm)	Sound attenuation (dB)								Weight (kg)
				Mean frequency of octave band (Hz)								
				63	125	250	500	1000	2000	4000	8000	
100	300	210	161	9	9	8	16	28	24	20	19	3,0
100	600	210	161	15	14	15	22	35	42	41	29	4,7
100	1000	210	161	18	23	27	33	53	56	53	49	6,9
125	300	225	186	8	7	7	14	25	20	17	14	3,4
125	600	225	186	12	13	13	21	33	40	34	25	5,4
125	1000	225	186	18	21	21	32	49	54	53	43	7,8
160	300	280	221	7	6	8	15	19	14	15	11	4,3
160	600	280	221	13	8	13	22	37	35	32	21	6,9
160	1000	280	221	22	13	19	31	46	45	50	33	10,0
200	300	295	261	6	5	6	14	17	14	11	9	5,0
200	600	295	261	13	8	10	19	30	29	22	16	7,7
200	1000	295	261	19	14	18	33	47	48	43	29	11,3
250	600	325	311	8	6	10	19	26	25	15	11	9,1
250	1000	325	311	14	10	15	27	40	42	30	18	13,3
315	600	365	376	7	5	8	17	21	19	16	10	10,8

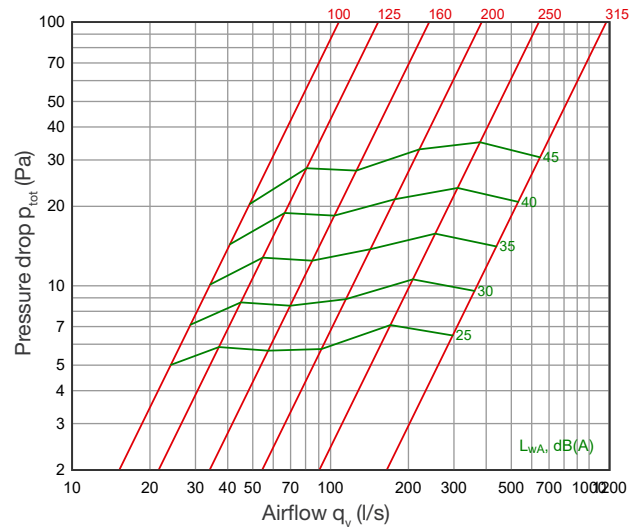
Nominal size Ød (mm)	L (mm)	A (mm)	B (mm)	Sound attenuation (dB)								Weight (kg)
				Mean frequency of octave band (Hz)								
				63	125	250	500	1000	2000	4000	8000	
315	1000	365	376	12	8	13	26	37	35	21	16	15,6
400	600	510	464	7	7	11	17	21	25	22	18	17,1
400	1000	510	461	8	11	15	25	33	36	35	29	24,7
500	600	560	561	0	8	10	18	24	26	23	19	21,2
500	1000	560	561	3	11	15	25	36	37	38	35	30,6
630	600	720	691	8	8	11	18	24	26	22	19	29,4
630	1000	720	691	11	12	17	27	34	37	36	27	43,1

Pressure drop for dimensions 100-315

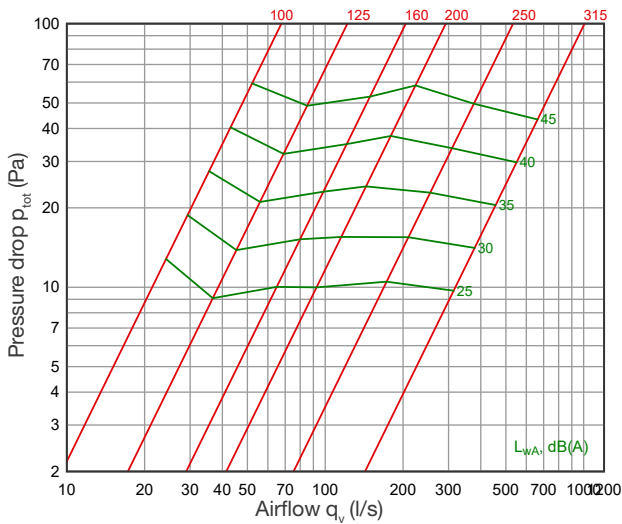
NTPA L=300



NTPA L=600

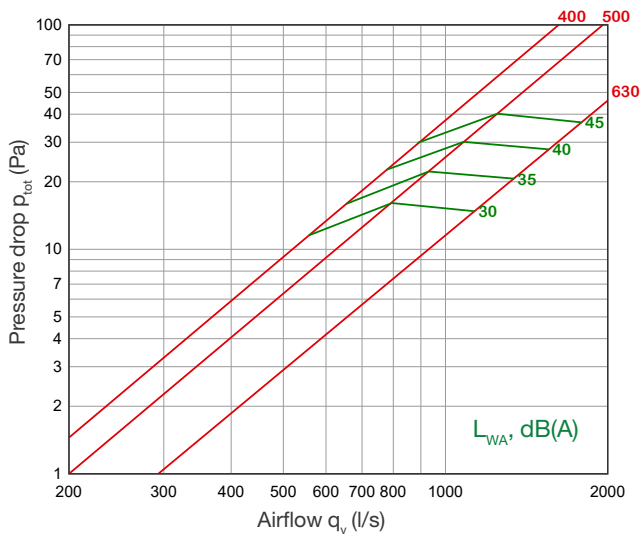


NTPA L= 1000

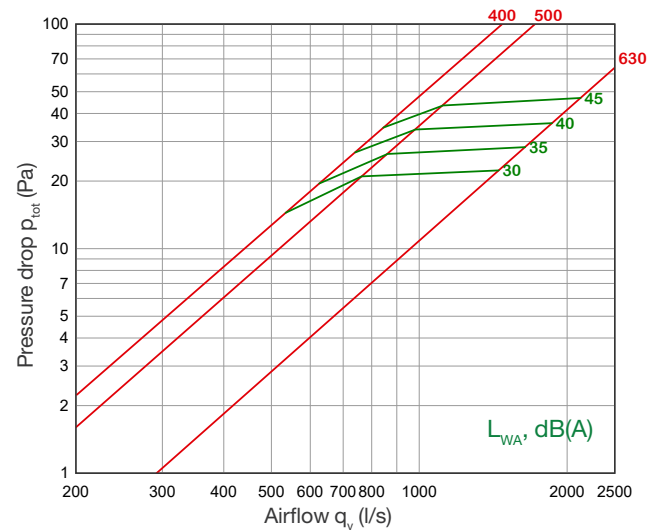


Pressure drop for dimensions 400-630

NTPA L=600



NTPA L=1000



$$L_{w,okt} = L_{WA} + K_{okt}$$

Product	Sound level correction factor $K_{okt}$ (dB)							
	63	125	250	500	1k	2k	4k	8k
NTPA 100-300	0	5	5	-2	-13	-22	-27	-28
NTPA 100-600	-1	6	7	1	-12	-22	-28	-27
NTPA 100-1000	3	5	6	-1	-11	-21	-25	-25
NTPA 125-300	4	8	5	-3	-14	-22	-24	-21
NTPA 125-600	4	9	6	-2	-13	-23	-25	-22
NTPA 125-1000	2	4	4	-2	-12	-21	-23	-22
NTPA 160-300	8	10	7	-3	-14	-22	-23	-18
NTPA 160-600	8	11	7	-2	-14	-21	-20	-16
NTPA 160-1000	8	9	5	-3	-13	-20	-18	-13
NTPA 200-300	8	6	4	-4	-13	-18	-20	-19
NTPA 200-600	8	8	5	-2	-12	-17	-19	-17
NTPA 200-1000	7	7	3	-4	-13	-18	-17	-17
NTPA 250-600	8	7	5	-1	-7	-13	-17	-19
NTPA 250-1000	6	6	4	-1	-8	-15	-18	-20
NTPA 315-600	12	7	3	-2	-8	-13	-16	-16
NTPA 315-1000	11	8	4	-2	-9	-14	-16	-16
NTPA 400-600	17	7	-1	-4	-5	-9	-15	-21
NTPA 400-1000	14	5	0	-4	-5	-8	-15	-22
NTPA 500-600	7	5	0	-3	-5	-8	-14	-21
NTPA 500-1000	8	5	1	-3	-5	-9	-15	-22
NTPA 630-600	10	4	-3	-4	-4	-7	-15	-20
NTPA 630-1000	8	3	-4	-4	-5	-6	-14	-22

**Product Marking**

NTPA - H d - L

Marking —————  
 NTPA - absorption material synthetic sound insulation

Material —————  
 Galvanized steel (Z275), standard material  
 ZM - zinc-magnesium coated steel (ZM310)  
 H - acidproof stainless steel (AISI 316L)

Diameter d —————

Length —————

Example: NTPA 160-600  
 NTPA-H 160-600