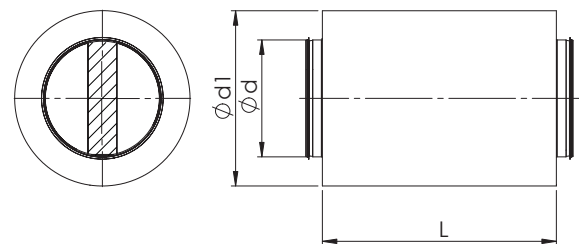
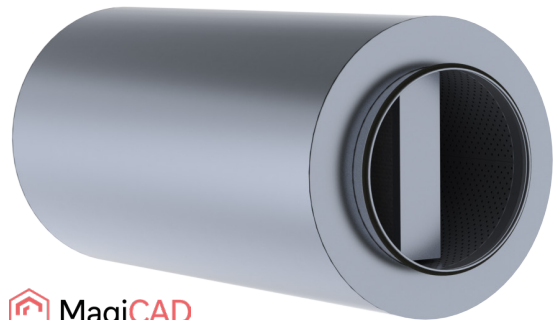


NRFB 100 / NRPB 100 Round Silencer

Round silencer with 100 mm sound absorption and 100 mm absorption element. NRFB-silencer's sound absorption material is mineral wool and NRPB-silencer's a synthetic sound insulation.

The perforated inner tube and outer shell are manufactured of galvanized steel. Between the inner tube and the insulation, there is fabric to prevent wool particles from entering the duct system.

Fulfils tightness class C.



Sound Attenuation and Dimensions

NRFB (absorption material mineral wool)

| Nominal size ϕd (mm) | L (mm) | ϕd_1 (mm) | Sound attenuation (dB) | | | | | | | | Weight (kg) |
|-------------------------------|--------|-----------------|------------------------------------|-----|-----|-----|------|------|------|------|-------------|
| | | | Mean frequency of octave band (Hz) | | | | | | | | |
| | | | 63 | 125 | 250 | 500 | 1000 | 2000 | 4000 | 8000 | |
| 315 | 600 | 515 | 3 | 7 | 11 | 18 | 24 | 33 | 23 | 16 | 18 |
| 315 | 900 | 515 | 4 | 8 | 16 | 26 | 34 | 43 | 30 | 20 | 26 |
| 315 | 1200 | 515 | 7 | 12 | 23 | 34 | 42 | 52 | 35 | 23 | 34 |
| 400 | 900 | 600 | 4 | 8 | 13 | 21 | 30 | 34 | 22 | 15 | 31 |
| 400 | 1200 | 600 | 5 | 11 | 19 | 28 | 37 | 42 | 26 | 18 | 41 |
| 500 | 600 | 700 | 2 | 4 | 8 | 14 | 22 | 22 | 14 | 11 | 27 |
| 500 | 900 | 700 | 3 | 6 | 11 | 18 | 27 | 25 | 16 | 13 | 38 |
| 500 | 1200 | 700 | 4 | 8 | 15 | 23 | 33 | 32 | 20 | 15 | 49 |
| 630 | 900 | 830 | 2 | 5 | 9 | 15 | 23 | 18 | 13 | 10 | 46 |
| 630 | 1200 | 830 | 3 | 7 | 12 | 19 | 28 | 21 | 15 | 12 | 59 |
| 800 | 900 | 1000 | 1 | 3 | 7 | 15 | 23 | 17 | 10 | 7 | 56 |
| 800 | 1200 | 1000 | 2 | 5 | 9 | 14 | 21 | 17 | 11 | 9 | 73 |
| 1000 | 1200 | 1200 | 1 | 3 | 7 | 12 | 17 | 13 | 6 | 3 | 92 |
| 1000 | 1500 | 1200 | 1 | 3 | 9 | 15 | 22 | 16 | 8 | 4 | 113 |
| 1250 | 2000 | 1450 | 2 | 4 | 10 | 15 | 23 | 13 | 6 | 3 | 196 |
| *1400 | 2000 | 1700 | 3 | 6 | 9 | 16 | 15 | 9 | 4 | 2 | 280 |

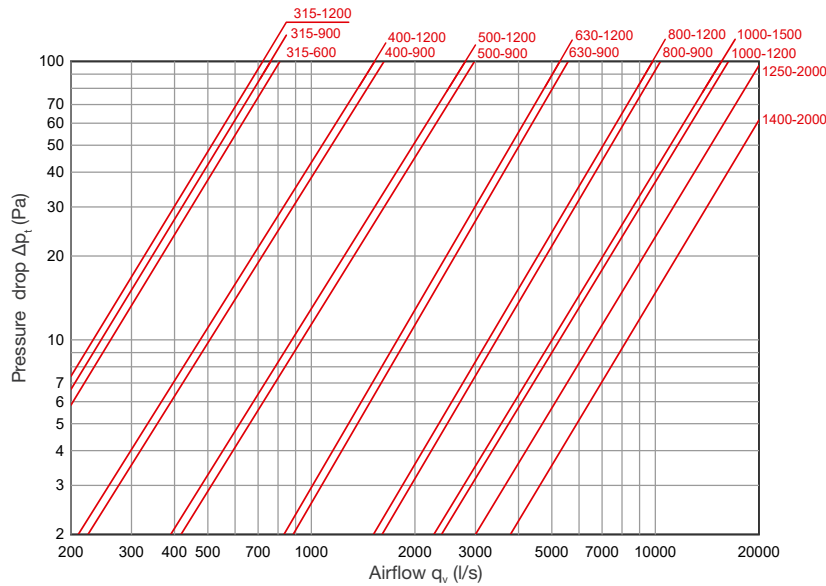
* A silencer with 150 mm insulation.

NRPB (absorption material synthetic sound insulation)

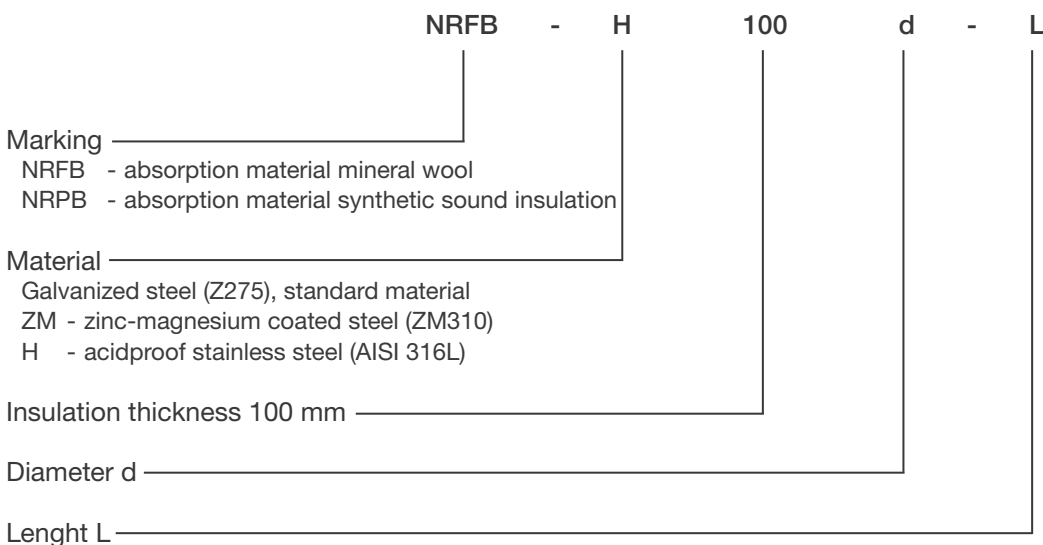
| Nominal size ϕd (mm) | L (mm) | ϕd_1 (mm) | Sound attenuation (dB) | | | | | | | | Weight (kg) |
|-------------------------------|--------|-----------------|------------------------------------|-----|-----|-----|------|------|------|------|-------------|
| | | | Mean frequency of octave band (Hz) | | | | | | | | |
| | | | 63 | 125 | 250 | 500 | 1000 | 2000 | 4000 | 8000 | |
| 315 | 600 | 515 | 3 | 7 | 8 | 9 | 22 | 31 | 23 | 17 | 15 |
| 315 | 900 | 515 | 4 | 9 | 12 | 15 | 30 | 41 | 30 | 22 | 21 |
| 315 | 1200 | 515 | 8 | 14 | 18 | 20 | 34 | 48 | 34 | 23 | 28 |
| 400 | 900 | 600 | 4 | 8 | 12 | 15 | 26 | 34 | 22 | 16 | 26 |
| 400 | 1200 | 600 | 5 | 12 | 15 | 15 | 29 | 40 | 26 | 18 | 34 |
| 500 | 900 | 700 | 3 | 7 | 7 | 12 | 24 | 15 | 15 | 14 | 31 |

| Nominal size Ø d (mm) | L (mm) | Ø d _i (mm) | Sound attenuation (dB) | | | | | | | | Weight (kg) |
|--------------------------|--------|-----------------------|------------------------------------|-----|-----|-----|------|------|------|------|-------------|
| | | | Mean frequency of octave band (Hz) | | | | | | | | |
| | | | 63 | 125 | 250 | 500 | 1000 | 2000 | 4000 | 8000 | |
| 500 | 1200 | 700 | 3 | 9 | 10 | 16 | 26 | 24 | 20 | 15 | 40 |
| 630 | 900 | 830 | 2 | 6 | 6 | 14 | 21 | 16 | 16 | 10 | 37 |
| 630 | 1200 | 830 | 3 | 7 | 9 | 16 | 26 | 19 | 17 | 12 | 49 |
| 800 | 900 | 1000 | 1 | 3 | 7 | 15 | 23 | 17 | 9 | 8 | 47 |
| 800 | 1200 | 1000 | 2 | 5 | 9 | 13 | 22 | 16 | 11 | 11 | 60 |

Technical Data



Product Marking



Example: NRFB 100 315-600
NRPB-H 100 315-600