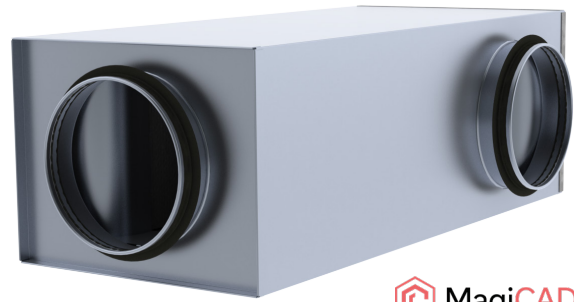


NKL Round Bend Silencer

NKL – rectangular bend silencer with round duct connections and without perforated sheet inside. Suitable for general ventilation system silencer and where a horizontal right-angled change of direction is required, especially in situations where the silencer dimensions should be smaller and the absorption values should be good.

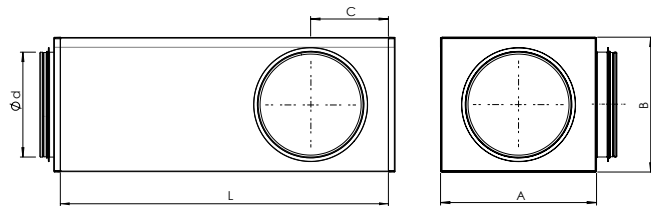


MagiCAD

- Connection from the side.
- Silencer's dimensions are minimized while maintaining excellent noise reduction characteristics.
- The compactness of the silencer makes it suitable for installation above suspended ceilings or in places where installation space is limited.
- Insulation material is resistant to cleaning (nylon brush).
- Insulation material coating does not absorb moisture.
- Tightness class C.

Design and Dimensions

NKL-silencer's outer shell is made of galvanized sheet steel. Connections are with rubber gaskets. Sound absorption duct element with good attenuation characteristics is made from synthetic material. Used synthetic insulation is classified as M1. Standard lengths 600 and 1000 mm.



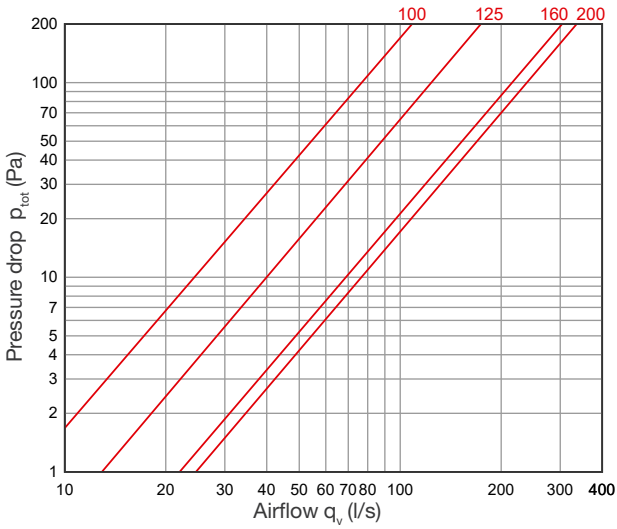
Sound Attenuation

Sound attenuation is specified to ISO 7235, i.e. static integral attenuation for duct products.

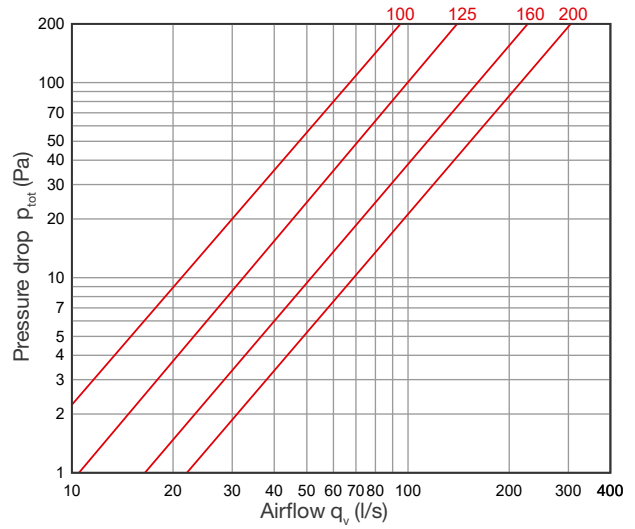
| Nominal size Ø d (mm) | L (mm) | A (mm) | B (mm) | C (mm) | Sound attenuation (dB) | | | | | | | | Weight (kg) |
|-----------------------|--------|--------|--------|--------|------------------------------------|-----|-----|-----|------|------|------|------|-------------|
| | | | | | Mean frequency of octave band (Hz) | | | | | | | | |
| | | | | | 63 | 125 | 250 | 500 | 1000 | 2000 | 4000 | 8000 | |
| 100 | 600 | 210 | 155 | 100 | 6 | 16 | 18 | 17 | 31 | 37 | 41 | 35 | 4,8 |
| 100 | 1000 | 210 | 155 | 100 | 0 | 23 | 25 | 25 | 41 | 48 | 47 | 44 | 7,1 |
| 125 | 600 | 225 | 180 | 112 | 1 | 17 | 14 | 18 | 28 | 34 | 39 | 30 | 5,5 |
| 125 | 1000 | 225 | 180 | 112 | 4 | 24 | 20 | 25 | 37 | 43 | 47 | 44 | 8,0 |
| 160 | 600 | 280 | 215 | 130 | 0 | 15 | 14 | 20 | 28 | 32 | 31 | 29 | 7,0 |
| 160 | 1000 | 280 | 215 | 130 | 6 | 19 | 20 | 26 | 36 | 44 | 48 | 44 | 10,2 |
| 200 | 600 | 295 | 255 | 150 | 5 | 10 | 12 | 21 | 26 | 28 | 26 | 25 | 7,9 |
| 200 | 1000 | 295 | 255 | 150 | 11 | 13 | 18 | 27 | 35 | 44 | 42 | 36 | 11,6 |

Pressure drop

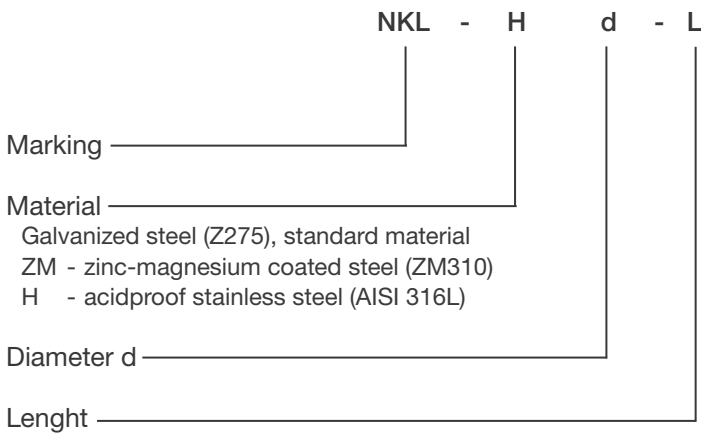
NKL L=600



NKL L=1000



Product Marking



Example: NKL 160-600
NKL-H 160-600