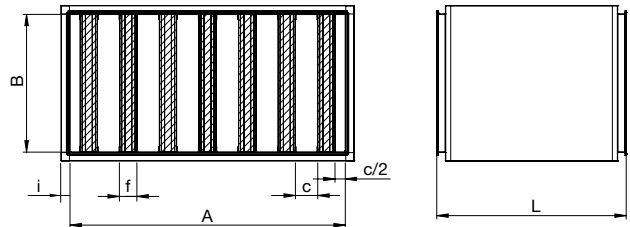
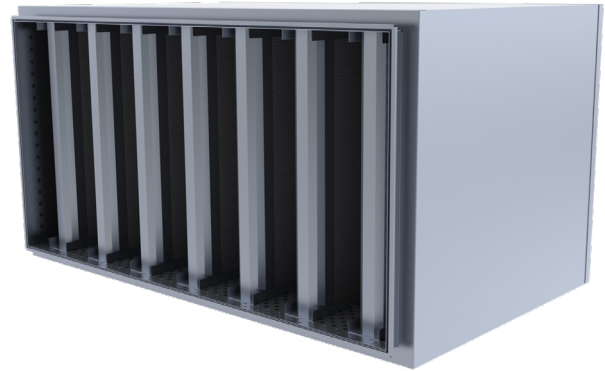


MSKI/MSPI/MSCI Rectangular Silencer

Silencer for rectangular duct systems. Suitable for use in exhaust, intake and discharge, supply air handling systems.

The elements are available in widths 100, 150 and 200 mm.

Standard lengths of rectangular silencers are 1250 and 2000 mm.



Design and Dimensions

MSKI/MSPI/MSCI-silencers with noise reducing insulation are covered with galvanized sheet metal plate and the internal casing are made of perforated sheet metal plate. Dimensions A and B are for the internal casing. Z-profile are attached to the internal casing at both ends.

MSKI absorption material: mineral wool board, covered with black glass fibre textile.

MSPI absorption material: synthetic sound insulation.

MSCI absorption material: Cleantec® mineral wool with washable surface layer.

For ventilation systems used in aggressive environments (or as special requirements) silencers could be made of special materials.

Product Marking

MSKI - ZM - i - ZM A x B - L - f x n - E30

Marking

- MSKI - absorption material mineral wool
- MSPI - absorption material synthetic sound insulation
- MSCI - absorption material Cleantec® mineral wool with washable surface layer

Material

- Galvanized steel (Z275), standard material
- ZM - zinc-magnesium coated steel (ZM310)
- H - acidproof stainless steel (AISI 316L)

Insulation

- S - thermal insulation (inner shell metal sheet): 50, 100 mm
- M - sound insulation (inner shell perforated sheet): 30, 50, 100 mm
- EI120 - fire insulation, 100 mm (inner shell metal sheet)

Outer shell material

- Galvanized steel (Z275), standard material
- ZM - zinc-magnesium coated steel (ZM310)
- H - acidproof stainless steel (AISI 316L)

Width A x Height B

Lenght L

Element width x Quantity

Duct connection

- Z-profile (standard connection), not marked
- E20 - europrofile
- E30 - europrofile

Example: MSKI-S50 600x400-1000-100x3

MSPI-ZM-S50-ZM 600x400-1000-100x3-E30