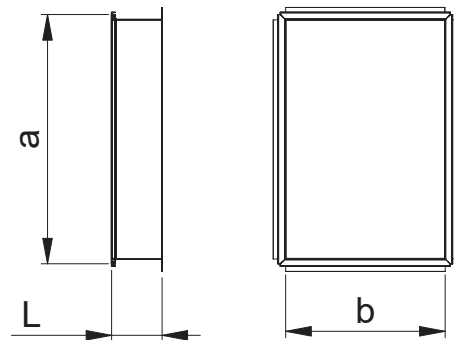
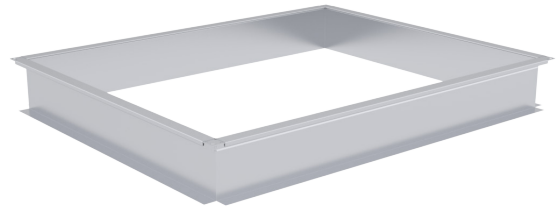


**ESS-T Straight saddle**

Straight saddle for a rectangular duct. Standard length 125 mm.

For connection the saddle is provided with E30-profile.



**Product codes**

	ESS-T	Material	a x b	(-)	L
Marking	_____	_____	_____	_____	_____
Material	_____	_____	_____	_____	_____
		Galvanized steel (DX51D+Z275), standard material ZM – zinc-magnesium coating (DX51D+ZM310)			
Nominal size a x b	_____	_____	_____	_____	_____
Duct connection	_____	_____	_____	_____	_____
		Standard E30-europrofile (-) - without a duct connection profile			
Length L	_____	_____	_____	_____	_____

Example: ESS-T-ZM 800x400 E30  
ESS-T 800x400/L=150 (-)