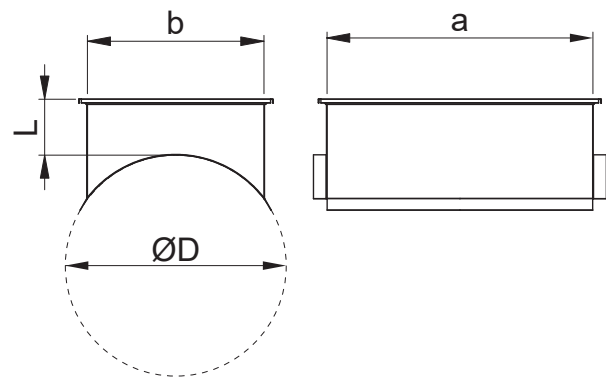
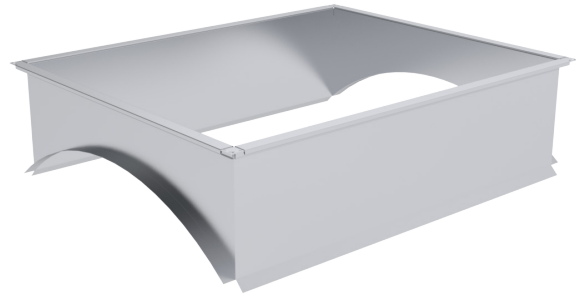


ESD-T Saddle for a round duct

Saddle for connecting with a round duct. Standard length is 125 mm.

For connection the saddle is provided with E30-profile. The end for a circular duct is bent.



Product codes

	ESD-T	Material	a x b	(-)	D	L
Marking	_____	_____	_____	_____	_____	_____
Material	_____	_____	_____	_____	_____	_____
		Galvanized steel (DX51D+Z275), standard material ZM – zinc-magnesium coating (DX51D+ZM310)				
Side a x side b	_____	_____	_____	_____	_____	_____
Duct connection	_____	_____	_____	_____	_____	_____
		Standard E30-europrofile (-) - without a duct connection profile				
Diameter D	_____	_____	_____	_____	_____	_____
Length L	_____	_____	_____	_____	_____	_____

Example: ESD-T 800x400/800 E30
ESD-T-ZM 800x400/800/L=150 (-)