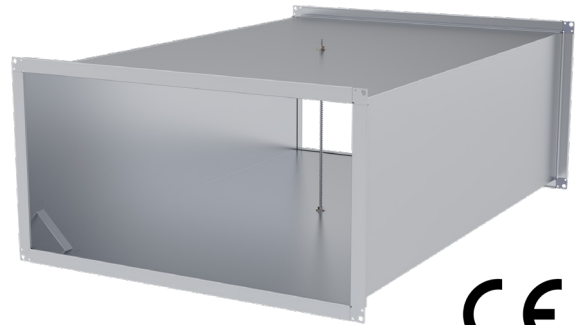


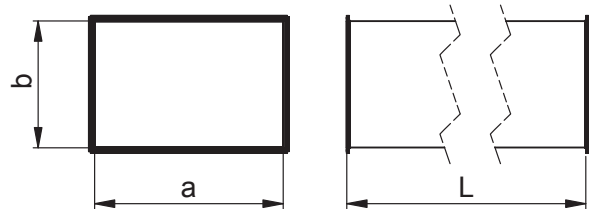
**EKT-T Duct**

A straight ventilation duct with a reinforced wave profile. Standard lengths of these ducts are 1250 and 2000 mm. For connection the duct is provided with E30-profile at both ends.



**Reinforcements**

- $a, b < 400$  and  $400 \leq L \leq 2000$  without rod
- $a \geq 400$  and  $L \geq 400$  reinforced with rods



**Product codes**

	EKT-T	Material	a x b	L
Marking	_____	_____	_____	_____
Material	_____	_____	_____	_____
Galvanized steel (DX51D+Z275), standard material ZM – zinc-magnesium coating (DX51D+ZM310)				
Nominal size a x b	_____	_____	_____	_____
Length L	_____	_____	_____	_____

Example: EKT-T 800x400/L=2000 E30