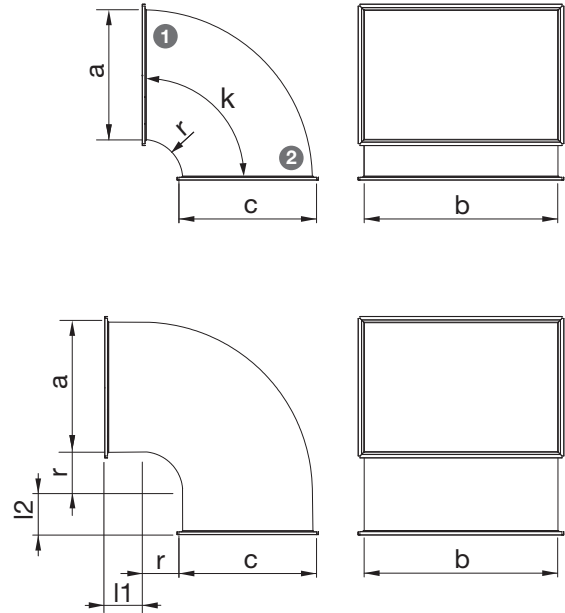


EKP-T Bend



A bend with a rounded external angle.
 In the event that side $a > 400$, the bend is provided with a reinforced guide.
 In the event that the bend angle is $\leq 45^\circ$ there is no guide.
 For connection the bend is provided with flanges height 30 mm.

Product codes

	EKP-T	Materjal	a x b	c x b	k	r	l1/l2
Marking	_____	_____	_____	_____	_____	_____	_____
Material	_____	_____	_____	_____	_____	_____	_____
		Galvanized steel (DX51D+Z275), standard material ZM – zinc-magnesium coating (DX51D+ZM310)					
Dimensions a x b	_____	_____	_____	_____	_____	_____	_____
Dimensions c x b	_____	_____	_____	_____	_____	_____	_____
Angle k	_____	_____	_____	_____	_____	_____	_____
Radius r	_____	_____	_____	_____	_____	_____	_____
Length l1/l2	_____	_____	_____	_____	_____	_____	_____

Example: EKP-T 800/600x400/90 r=125 /l1=50 E30/E30