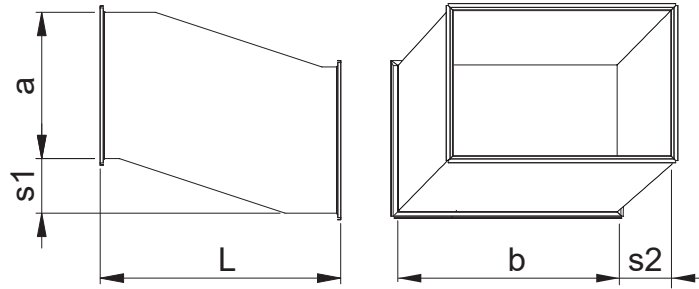
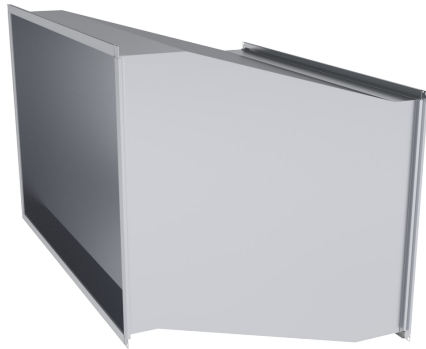


EKN-T Offset



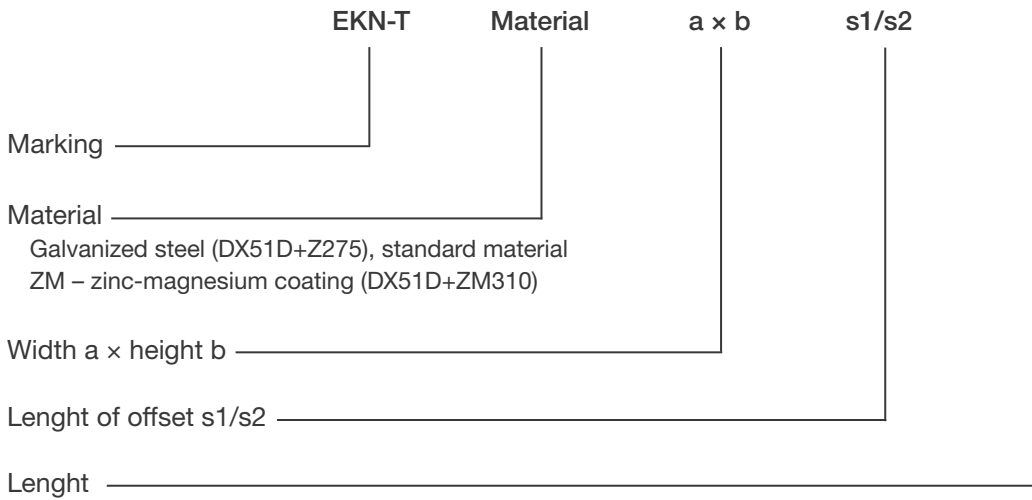
Offset is used for setting the ventilation system offset horizontally or vertically. The length of the offset depends on its size. The measures given in the table should be preferred, since ratio measures between height a, offset s and length l are important. Otherwise too sudden drop may limit air flow movement.

For connection the offset is provided with E30-profile at both ends.

a	b	s	l
100	200	50,100	300
	300		
	400		
150	200	50,100,150	350
	300		
	400		
	500		
	600		
200	100	50,100	300
	150		
	300		
	400	150, 200	400
	500		
	600		
300	100	50,100	400
	150		
	200		
	300		
	400	150, 200, 250, 300	500
	500		
	600		
	800		
400	100	50, 100	400
	150		
	200	150, 200	500
	300		
	400		
	500	250, 300, 350, 400	600
	600		
	800		
	1000		

a	b	s	l			
500	150	50,100,150	500			
	200					
	300	200, 250	600			
	400					
	600					
800	800	300, 350, 400, 450, 500	700			
	1000					
	600			200	50, 100, 150	500
				300		
				400	200, 250	650
				500		
800						
1000	1000	400, 450, 500, 550, 600	800			
	800			300	50,100	500
				400		
				500	150	600
				600		
				1000		
	400			400	200, 250	700
				500		
				600	300, 350	800
				800		
1000						
500	500	400, 450, 500	900			
	600					
	800	600, 700	1100			
	1000					
	1000					
600	600	50, 100	550			
	800					
	1000	150, 200	700			
	1000					
	1000					
700	700	250, 300	850			
	1000					
	1000	350, 400, 450, 500	1000			
	1000					
	1000					
800	800	600, 700, 800, 900	1200			
	1000					
	1000					
	1000					
	1000					

Product codes



Example: EKN-T 800x400/50/L=300 E30