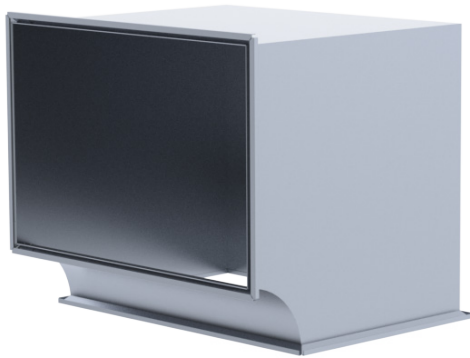
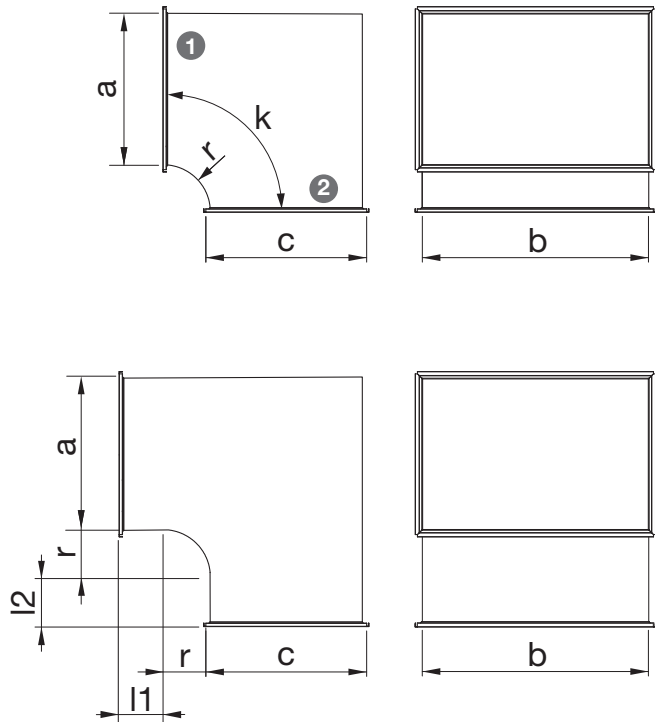


EKPK Elbow



Elbow with sharp outer corner.
 Stiffened with a guide blade when side $a > 400$.
 When angle $\leq 45^\circ$, no guide blade.
 Standard radius is 125 mm.



Product codes

EKPK - Material - $a \times b$ - $c \times b$ - 90 - 125 - $l1/l2$ - Z

Product	_____
Material	_____
Galvanized steel (DX51D+Z275), standard material	
ZM - Zinc-magnesium coated steel (DX51D+ZM310)	
H - Acidproof stainless steel AISI 316	
Dimensions $a \times b$	_____
Dimensions $c \times b$	_____
Angle k	_____
Radius r	_____
Extension $l1/l2$ (optional)	_____
Duct connection	_____

Example: EKPK-H 800x400/500x400/90/r=125 Z/Z