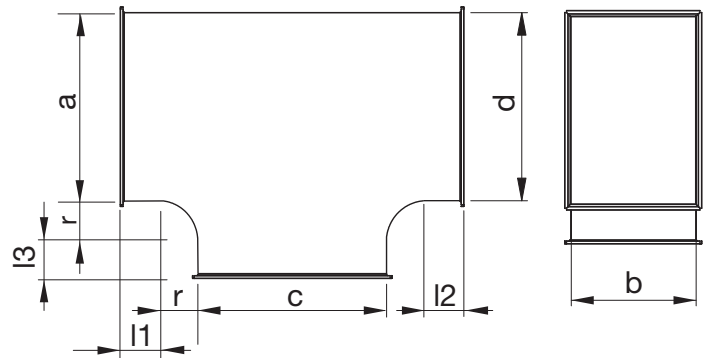
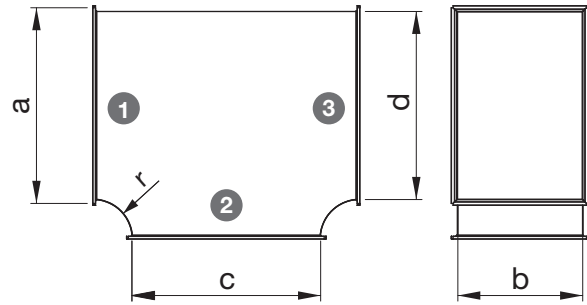
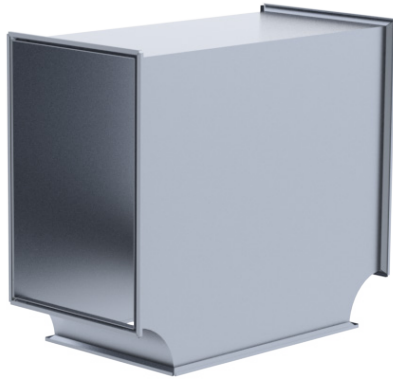


**EKM T-piece**



T-pieces are used to direct the conduit in two different directions. Side dimensions (a, c, d) of the T-piece may differ. Standard radius is 125 mm.

**Product codes**

	EKM	Material	a x b	c x b	d x b	125	l1/l2/l3
Product							
Material		Galvanized steel (DX51D+Z275), standard material ZM – Zinc-magnesium coated steel (DX51D+ZM310) H – Acidproof stainless steel AISI 316					
Dimensions a x b							
Dimensions c x b							
Dimensions d x b							
Radius r							
Length l1/l2/l3 (optional)							

Example: EKM-ZM 500x800/600x800/400x800/r=125/l1=1000/l2=500/l3=400 Z/Z/Z