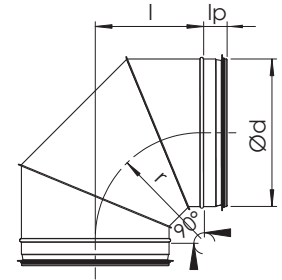


**NVK 90° Kortböj**

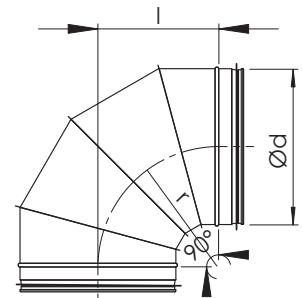
Segmenterad och falsad böj.

Nominell dimension d (mm)	r (mm)	l (mm)	l <sub>p</sub> (mm)	Segment (st)	Vikt (kg)
200	130	130	30	3	1,1
250	165	165	50	3	1,4
315	185	185	50	3	1,9
400	230	230	50	3	3,9
500	290	290	61	3	6,3
630	395	395	61	4	8,4
800	480	480	96	4	16
1000	580	580	110	4	29
1250	700	700	110	4	40

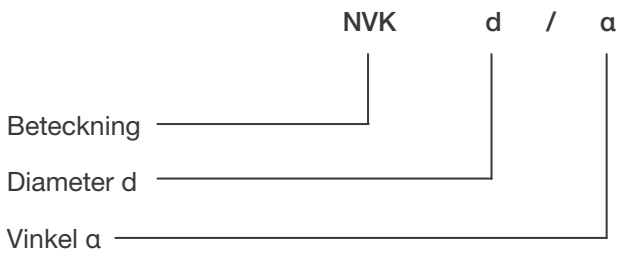
200-500



630-1250



**Markering**



Exempel: NVK 315/90