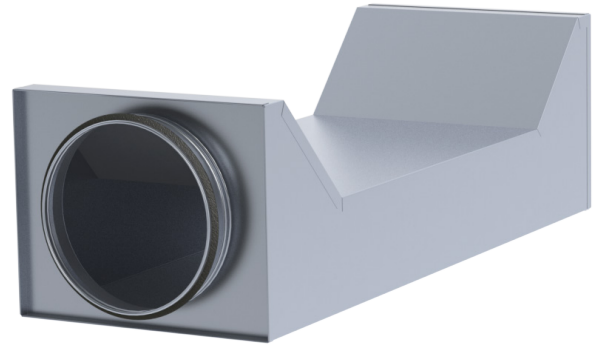


**NTL Crossing tee**

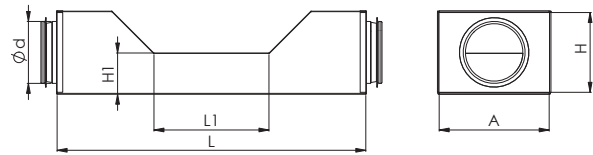
Crossing tee for crossing ducts in cramped spaces.  
Permits crossing on one plane.

- The pressure drop does not increase remarkably
- With round duct connections.



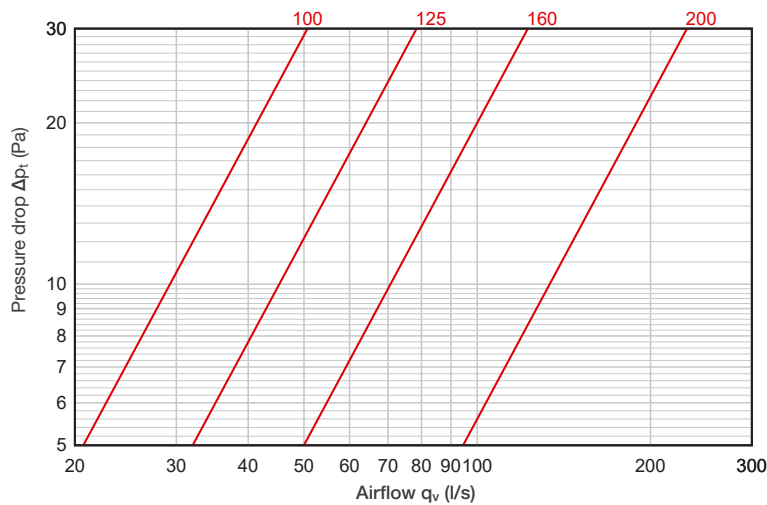
**Construction and dimensions**

Standard material: galvanized steel. Can also be manufactured of other materials.

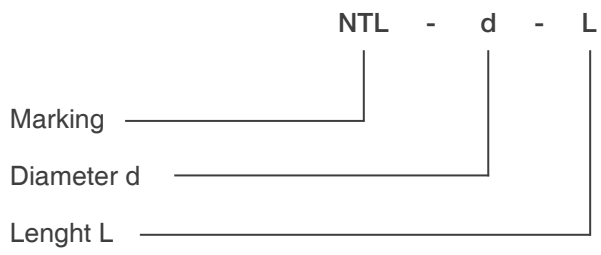


Nominal size, Ød	L, mm	A, mm	H, mm	H1, mm	L1, mm	Weight, kg
100	500	180	130	60	185	2,1
100	690	180	130	60	370	2,6
125	500	180	160	80	185	2,4
125	690	180	160	80	370	2,8
125	800	180	160	80	485	3,6
160	600	300	170	85	305	3,9
160	800	300	170	85	485	5,0
160	900	300	170	85	605	5,0
200	500	300	240	120	305	3,7
200	800	300	240	120	485	5,5
200	900	300	240	120	605	5,6

**Pressure drop**



Product codes



Example: NTL 125-500