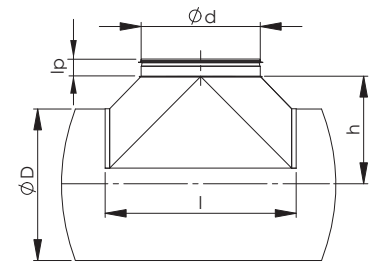
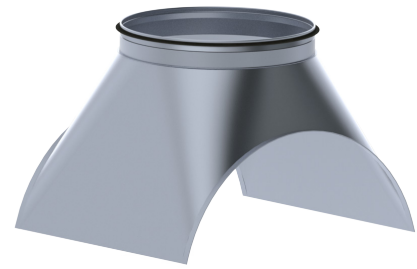
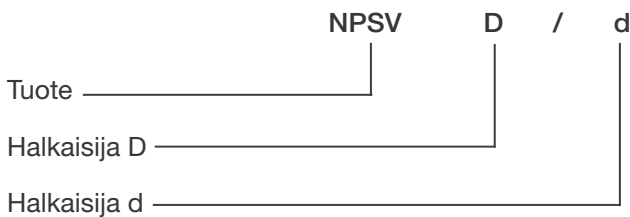


**NPSV Lähtökaulus (palaosa)**

Nimellismitta D/d (mm)	l (mm)	l <sub>p</sub> (mm)	h (mm)	Paino (kg)
400/400	625	50	300	2,9
500/400	636	50	355	3,2
500/500	720	51	350	3,9
630/400	636	50	410	3,2
630/500	733	51	370	4,7
630/630	866	51	420	5,7
800/400	636	50	505	3,5
800/500	720	51	510	4,6
800/630	850	51	520	6,2
800/800	1060	75	520	8,6
1000/500	713	51	600	4,9
1000/630	845	51	600	7,2
1000/800	1042	75	610	10,1
1000/1000	1252	89	615	15,3
1250/630	845	51	725	11,0
1250/800	1083	75	760	9,0
1250/1000	1251	89	745	15,0
1250/1250	1560	89	775	22,0



**Tuotemerkintä**



**Esimerkki: NPSV 500/400**