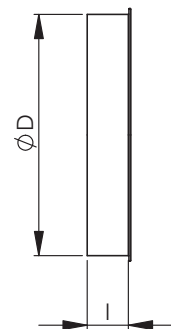
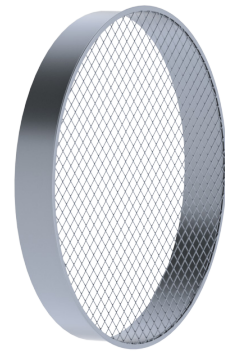


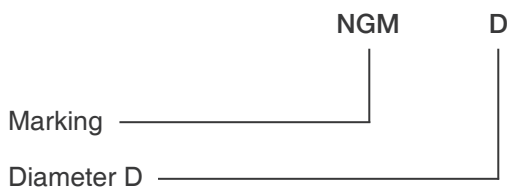
NGM Take-off with mesh for fitting

Take-off equipped with a mesh is used at the end of the air supply and exhaust duct.

| Nominal size d | l (mm) | Weight (kg) |
|-------------------|-----------|----------------|
| 100 | 39 | 0,1 |
| 125 | 39 | 0,13 |
| 160 | 39 | 0,17 |
| 200 | 39 | 0,25 |
| 250 | 58 | 0,4 |
| 315 | 58 | 0,5 |
| 400 | 55 | 0,8 |
| 500 | 70 | 1,1 |
| 630 | 70 | 1,4 |
| 800 | 103 | 2,4 |
| 1000 | 103 | 3,7 |
| 1250 | 103 | 4,6 |



Product codes



Example: NGM 315