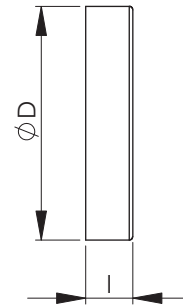
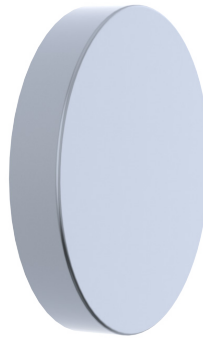


NALM End cap

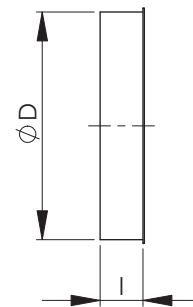
End cap with female end.

| Nominal size D | l (mm) | Weight (kg) |
|-------------------|-----------|----------------|
| 80 | 40 | 0,06 |
| 100 | 40 | 0,09 |
| 125 | 40 | 0,11 |
| 160 | 40 | 0,16 |
| 200 | 40 | 0,21 |
| 250 | 40 | 0,34 |
| 315 | 40 | 0,51 |
| 400 | 60 | 0,76 |
| 500 | 75 | 1,9 |
| 630 | 75 | 2,8 |
| 800 | 115 | 4,5 |
| 1000 | 115 | 8,5 |
| 1250 | 115 | 12,5 |

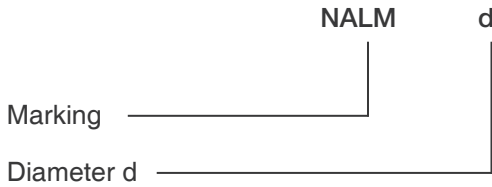
80-315



400-1250



Product codes



Example: NALM 315