

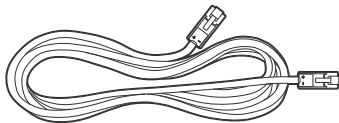
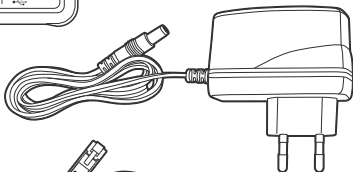
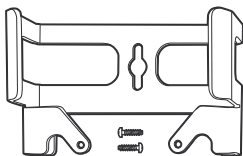
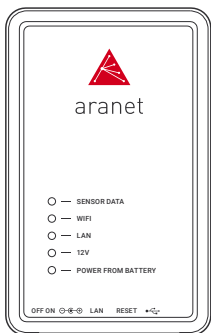
Aranet PRO

Quick Start

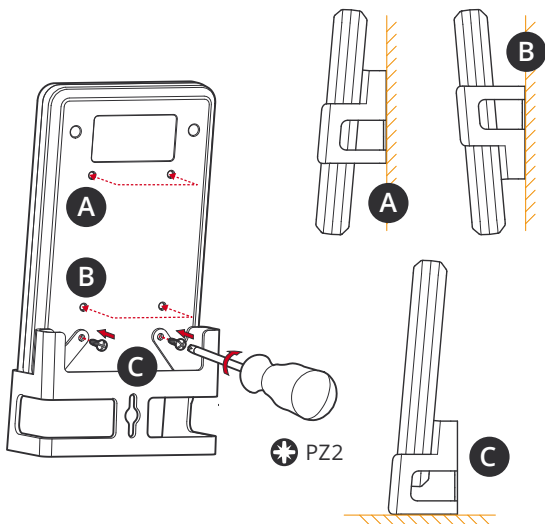
Guide



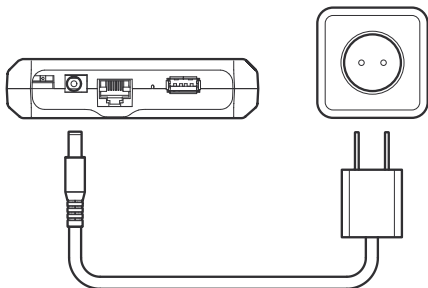
1. CHECK THE CONTENTS OF THE BOX



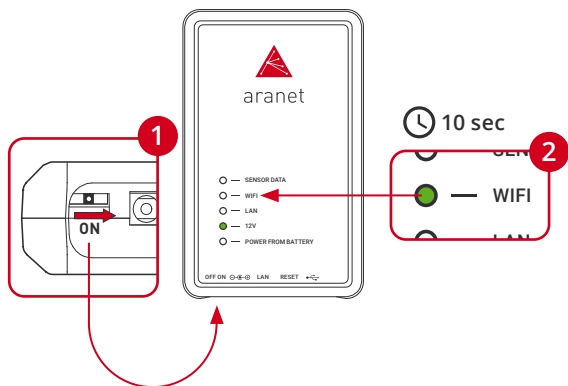
2. ATTACH THE DEVICE TO THE MOUNT



3. CONNECT POWER TO THE DEVICE



4. TURN THE DEVICE ON



5. CONNECT TO THE DEVICE

1 WiFi SSID "Aranet-*****"

2 <http://192.168.206.100>

Login

Username

root

Password

Remember me LOGIN

3

THE DEFAULT ADMINISTRATOR LOGIN

Username: **root**

Password: **changeme**

6. CONFIGURE THE DEVICE



Change your password, modify and add users in the **Users** setting section.



Set the device time in the **System > Time** setting section.



Scan the availability of the radio channel in the **Sensors > Radio** setting section.



Pair your sensors by pressing the **Add sensor** button in the **Sensors > Sensors** setting section.



Enter the **Notifications** setting section, to configure your sms and/or e-mail notifications.

ADDITIONAL RESOURCES

Please refer to the Aranet PRO User Manual for detailed instructions

<https://aranet.com/product/aranet-pro/user-manual/>

To view Terms&Conditions visit

<https://aranet.com/terms-and-conditions/>

To view Returns&Guarantees visit

<https://aranet.com/returns-guarantees/>

To fill RMA form visit

<https://aranet.com/rma/>

SUOMALAINEN



- 1 Tarkista laatikon sisältö
 - 2 Liitä laite kiinnikkeeseen
 - 3 Kytke virta laitteeseen / PoE valinnainen lisävaruste
 - 4 Kytke laite päälle
 - 5 Yhdistä laitteeseen
 - 6 Määritä laitteen asetukset
- 👤 **Vaihda salasanasasi**, muuta ja lisää käyttäjät **Users** asetusten osiossa.
 - 🕒 Aseta laitteen aikaa **System > Time** asetusten osiossa.
 - 📶 Tarkista radiokanavien saatavuus **Sensors > Radio** asetusten osiossa.
 - ⊕ Muodosta laitepari painamalla **Add sensor**-painiketta **Sensors > Sensors** asetusten osiossa.
 - ✉ Määritä sms ja/tai sähköposti-ilmoitukset **Notifications** asetusten osiossa.

Nähdäksesi Aranet PRO Käyttöohjee ole hyvä ja käy sivulla <https://aranet.com/product/aranet-pro/user-manual/>

SVENSKA



- 1 Kontrollera innehållet i boxen
 - 2 Fäst enheten på fästet
 - 3 Anslut ström till enheten / Tillvalstillbehör för PoE
 - 4 Slå på enheten
 - 5 Anslut enheten
 - 6 Konfigurera enheten
- 👤 **Ändra ditt lösenord**, konfigurera och lägg till användare i inställningssektion **Users**.
 - 🕒 Ställ in enhetstid i inställningssektion **System > Time**.
 - 📶 Utför skanning av tillgängliga radiokanaler i inställningssektion **Sensors > Radio**.
 - ⊕ Utför parning av dina sensorer genom att trycka på knappen **Add Sensor** i inställningssektion **Sensors > Sensors**.
 - ✉ Gå in i inställningssektion **Notifications** för att konfigurera dina SMS och/eller e-post anmälningar.

För att läsa Användarmanual av "Aranet PRO", besök vänligen <https://aranet.com/product/aranet-pro/user-manual/>

SCAN QR CODE TO SEE THE ARANET PRO USER MANUAL



The information presented in this guide is the property of SAF Tehnika, JSC. No part of this document may be reproduced or transmitted without proper permission from SAF Tehnika, JSC.

The specifications or information contained in this document are subject to change without notice due to continuing introduction of design improvements. If there is any conflict between this document and compliance statements, the latter will supersede this document.

SAF Tehnika, JSC has no liability for typing errors in this document or damages of any kind that result from the use of this document.

To get up to date information about accessories and their availability, please contact sales representative.

Copyright © 2021 SAF Tehnika, JSC. All rights reserved.